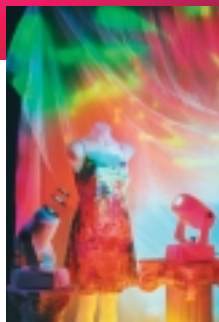


ATMOSPHERES[®] C-16[™]

architectural luminaire



JUST ADD COLOR

The new **ATMOSPHERES C-16™** is a versatile, color-changing spot/wash luminaire that lets you change your environment or mood simply and at minimal cost.

These **RELIABLE, COMPACT** fixtures are easily installed and require little maintenance. Choose control options from several onboard programs in stand-alone or master/slave mode. Or **CREATE YOUR OWN ENVIRONMENT** via any DMX-512 controller.

The wide variety of **LONG LIFE MR-16** lamps available allows you to choose the attributes you need in your design. Beam angles from 10-40 degrees and a pleasing color temperature and CRI when used with no color makes this fixture ideal for task and accent lighting. But when it's time to change your atmosphere, command the power of color. Generate soothing transitions which gently morph from color to color. Create high energy color changes or just bask in the frequency you desire.

The fixture ships with 6 delicious, easily exchanged dichroic colors and more are available. From pastel highlights to deep saturates, CTO to CTB, you are now free to create the color palette specific to your design. Simply. Affordably.

On-board Electronic Dimming

Low Maintenance/High Reliability

Color Morphing System for Multiple Effects

Control via DMX-512, Onboard Presets, or Handshake[®] (with Your PDA)

Versatile MR-16 Lamp Makes Great White Light, too

Lightweight, Compact, Quiet, Energy Efficient, Affordable

Optional Lens Kit Provides Hard-edge Beam or Sharp Projection of Lithos



ATMOSPHERES[®] C-16™



High End



SYSTEMS
LIGHTING • WORLDWIDE

The **A200 controller** stores up to 8 programs via any DMX controller. Playback couldn't be simpler!



FEATURES

Fixture construction:	Die cast Aluminum (AL-380)
Dimming:	0 to 100% on-board electronic dimming
Color change:	Carousel Blending System
Pan / Tilt:	Manually adjustable
Pan range:	180°
Tilt range:	180°
Fixture color:	White, Silver, Black (custom colors available)
Weight:	Less than 8 lbs.

OPTICAL SPECIFICATIONS

Frost lens:	Standard
Dichroic filters:	Removable—Red, Aqua, Magenta, Yellow, Blue, Pink (Additional colors available)
Beam Shaping Lens:	Optional
Projection Lens Kit:	Optional

ELECTRICAL SPECIFICATIONS

Voltage:	100V - 230V, 50/60Hz
Power supply:	Electronic 12V DC
Voltage/frequency selection:	Automatic
Current draw:	Less than 1 amp

DATA & POWER CONFIGURATIONS

- 5-pin XLR and AC power cord
- RJ 45 and AC power cord
- RJ 45 only—J-box wall/ceiling mount
- Optional 4-foot cable separates power supply from head

ADDRESSING

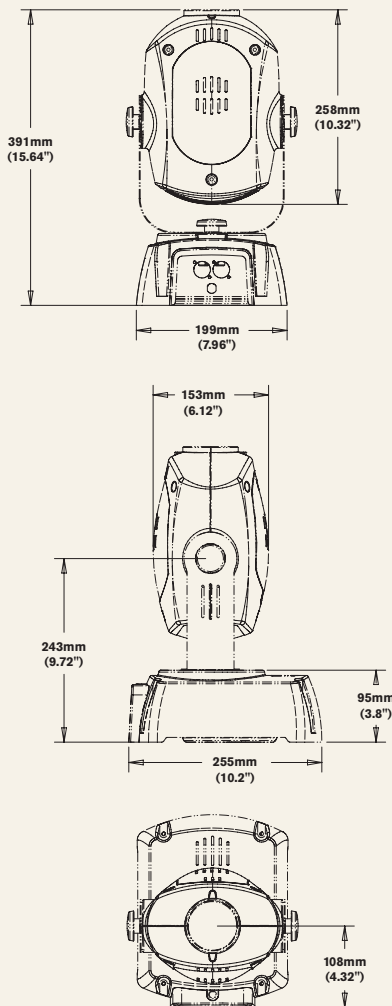
- 10 pos. DIP switch (also controls stand alone function)

LAMP

Model:	MR-16 IR 50w
Color temperature:	3000°K
Lamp life:	4,000 hours average rated life
Field angle:	Ships with 25° (10° to 40° available)
Optional lamps:	Any 12V MR-16 up to 50 watts
Field angles available:	10° to 40°

CONTROL

- Atmospheres A200 (master) and A100 (slave) controllers
- DMX-512 control: Channel 1 - color change, Channel 2 - dimming
- Stand alone mode featuring several pre-programmed scenes
- Master/slave runs multiple fixtures
- Handshake[®] with your PDA



COOLING

Convection/no fans

HIGH END SYSTEMS, INC.

2217 West Braker Lane
Austin, Texas 78758 USA
Tel: 512.836.2242
Fax: 512.837.5290
sales@highend.com
www.highend.com

Los Angeles:
1.818.947.0550
New York:
1.212.957.6840
London:
44.20.8579.5665
Singapore:
65.6742.8266
Orlando:
1.407.296.3359

© 2002 High End Systems, Inc.
All specifications subject to change without notice.
110402



JUST ADD COLOR

COMPLIANCE

UL-1598 CSA 250.0	Approved for Commercial / Retail installations
EN60598-1	European Luminary Standard
EN60598-2-17	European Stage & Studio Standard