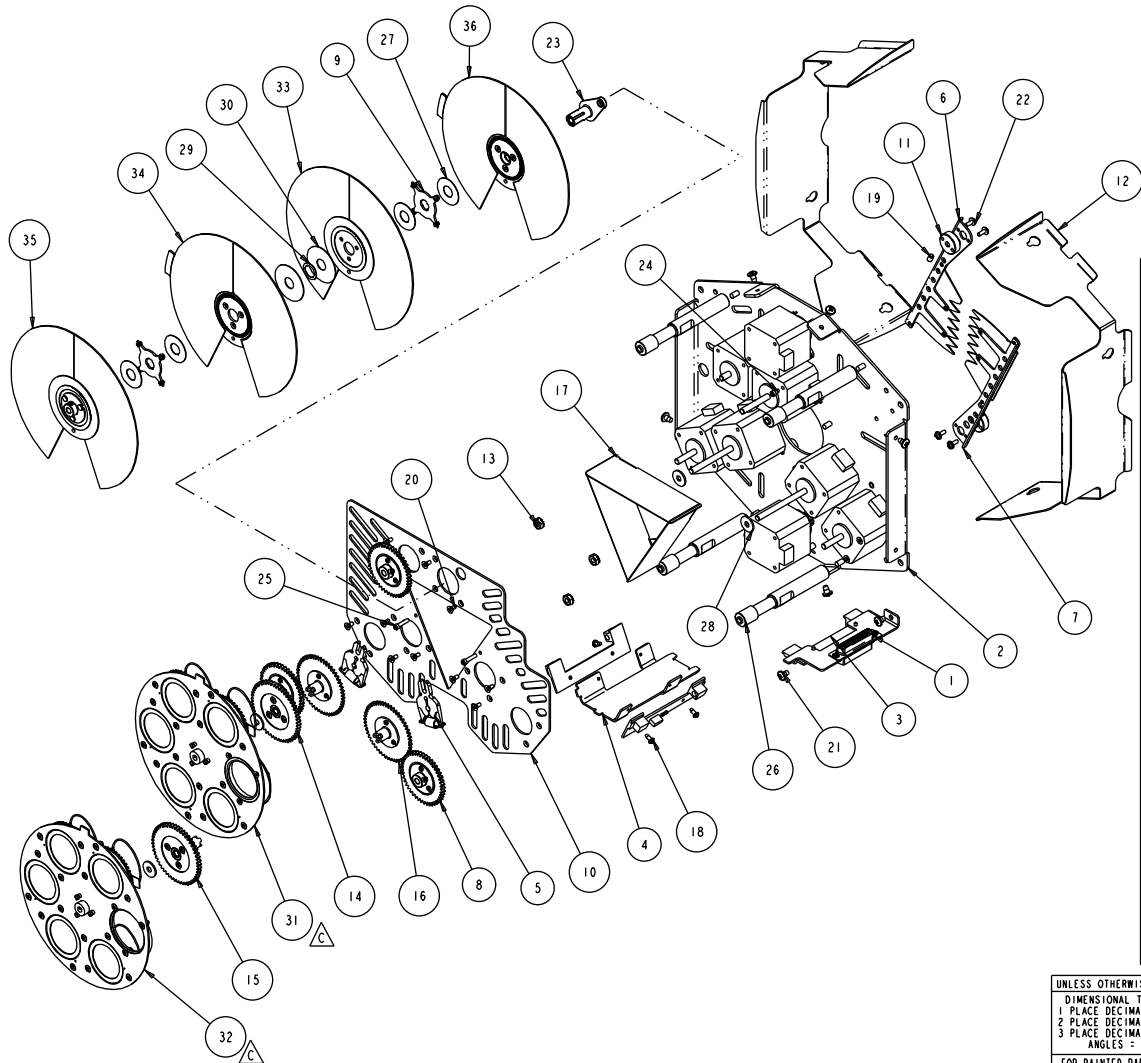


SP500



REV.	DESCRIPTION	DATE	ENG	ECO #	APPR
A	RELEASED AT REV 'A'	16FEB00	LR		
B	REPLACE TORQUE ARM WITH MIP VERSION	04OCT00	LR	#295	RV
C	REPLACE WHEEL ASSY'S WITH SINGLE RACE VERSION: 80190039-SP058 NOW: 80200056-SP016-UPPER 80200023-SP499 NOW: 80200054-SP014-DIFFSN	15JAN03	LR	#1172	

ANCILLARY DRAWING

ITEM NO.	QTY.	FILENAME	PART NO.	REV.	DESCRIPTION
36	1	SP505	CHARTED	A	WHEEL, COLOR MAGENTA LOWER CM575 / ES-1
35	1	SP507	CHARTED	A	WHEEL, COLOR CYAN UPPER CM575 / ES-1
34	1	SP506	CHARTED	A	WHEEL, COLOR CYAN LOWER CM575 / ES-1
33	1	SP508	CHARTED	A	WHEEL, COLOR ASSY, MAGENTA UPPER CM575 / ES-1
32	1	SPA016	80200056	-	WHEEL, LITHO UPPER S5575 SR
31	1	SPA014	80200054	-	WHEEL, ASSY LITHO W/DIFFSN S5575 SR
30	2	SP537	90706107	I	WASHER, 1.35 X .41 C X .020 TEFLON
29	1	WAVE_WSHR_618	90706098	I	WASHER, WAVE .4401D X .6180D
28	4	SP132	90706083	A	WASHER, THRUST, OPTICAL MODULE ASSY
27	4	SP518	90706094	-	WASHER, .410 ID X 1.000 OD X .015 THK, TEFLON
26	4	SP013	90702100	B	STANDOFF F/F, OPTICAL MODULE
25	2	SCREW4-40AC380BZP	90707035	I	SOCKET, CAP 4-40 X 3/8 ALLOY BZ PATCH
24	1	SCREW4-40AC188SS	90707035	I	SOCKET, CAP 4-40 X 3/8 ALLOY BZ PATCH
23	1	SP532	99260311	A	SHAFT, TORQUE ARM ASSY CMY
22	4	SCREW4-40PPW312BZ	90709118	I	SCREW, PHIL PAN SIMS 4-40 X 5/16 BZ
21	8	SCREW8-18PPB250BZ	90709024	I	SCREW, PHIL PAN #8 X 1/4 TYPE B SBZ
20	15	SCREW4-40PF250SBZ	90711003	I	SCREW, PHIL FLAT 4-40 X 1/4 M/S SBZ
19	2	SCREW8-32SET250BZFLATPT	90707091	-	SCREW, 8-32 SOCKET SET, 1/4 BZ FLAT POINT
18	4	SCREW4-20PPB0025SS	90709030	I	SCREW, 4-20 X 1/4 PHIL PAN TYPE B SS
17	3	SP352	99130015	C	REFLECTOR, HEAT/LIGHT STUDIO SPOT
16	2	SP471	99430051	B	OUTDRIVE, ASM., W / STAMPED GEAR
15	1	SP473	99430049	-	OUTDRIVE, ASM., UPPER LITHO
14	1	SP472	99430050	-	OUTDRIVE, ASM., LOWER LITHO
13	3	NUT8-32KEP	90703023	-	NUT, KEPS 8-32 KEPS NUT S2
12	2	SP293	80071243	B	LIGHT BLOCK, OPTICAL MODULE
11	2	SP452	99400035	A	HUB, DIM/STROBE FLAG, 8-32 THD
10	1	SP357	90411047	J	HEATSINK, MOTOR OPTICAL MODULE
9	2	SP534	99430055	-	GEAR, ASSY 4 AXLE SPIDER CMY S75
8	3	SP305	99430018	-	GEAR, 45 TOOTH, W/HUB ASSY
7	1	SP203	80560018	A	FLAG, DIM/STROBE UPPER ASSY (FLAT)
6	1	SP202	80560017	A	FLAG, DIM/STROBE LOWER ASSY (BENT)
5	2	SP207	80140022	-	DAMPER, MOTOR BRAKE ASSY RTP
4	1	SP282	99260164	A	BRACKET, SENSOR LITHO WHEEL
3	2	SP125	80050029	I	BOARD, WIDE SENSOR TESTED PROD. STC
2	1	SP459	NA	A	ASSY, MOTOR MOUNT OPT MOD
1	1	SP290	-	-	ASSEMBLY, SENSOR BOARD MOUNT COLORWHEELS

UNLESS OTHERWISE SPECIFIED DIMENSIONAL TOLERANCES: 1 PLACE DECIMALS = ± .015 2 PLACE DECIMALS = ± .010 3 PLACE DECIMALS = ± .005 ANGLES = ± 1.0°	RELEASE DATE: 16FEB00 ENG: D FRANKLIN MEG: MEG:	CE: OA: DRW: L ROESSLER	High End 2209 WEST BRAKER LANE AUSTIN, TEXAS 78758 (512) 832-0363 FAX (512) 832-8542 http://www.highend.com	LR LIGHTWAVE RESEARCH
FOR PAINTED PARTS REFER TO ENG. SPEC. MANUAL WI-0592	MATERIAL: CHARTED	FINISH: NA	DESCRIPTION: OPTICAL MODULE, LOWER ASSY SP575 CMY SVC	
MIN. DRAFT NA	MIN. RADII NA	FLATNESS NA	THICKNESS NA	VOLUME NA
UNLESS OTHERWISE SPECIFIED INTERPRET DIMENSIONS PER ASME Y14.5M-1994 DIMENSIONS ARE IN INCHES DRAWING USES THIRD ANGLE PROJECTION		SIZE D	PART NO.	DRAWING NO. SP500
DO NOT SCALE DRAWING		SCALE: 0.500	SHEET: 1 OF 1	

PROPRIETARY NOTICE:
THIS DOCUMENT CONTAINS CONFIDENTIAL AND PROPRIETARY INFORMATION OF HIGH END SYSTEMS INC., (ALSO DBA LIGHTWAVE RESEARCH) AND IS GIVEN TO THE RECEIVER IN CONFIDENCE. THE RECEIVER ACCEPTS AND AGREES THAT, EXCEPT AS AUTHORIZED BY HIGH END SYSTEMS, THE RECEIVER WILL NOT PERMIT THE USE OF THE DOCUMENT OR ANY COPY THEREOF OR THE INFORMATION THEREIN, WILL NOT COPY OR PERMIT COPYING THE DOCUMENT OR THE INFORMATION THEREIN, AND WILL UPON COMPLETION OF THE NEED TO RETAIN THE DOCUMENT, OR UPON DEMAND, RETURN THE DOCUMENT WITHOUT RETAINING ANY OF THE INFORMATION CONTAINED THEREIN IN ANY FORM WHATSOEVER.