

PRODUCTION PRINT

High End Systems

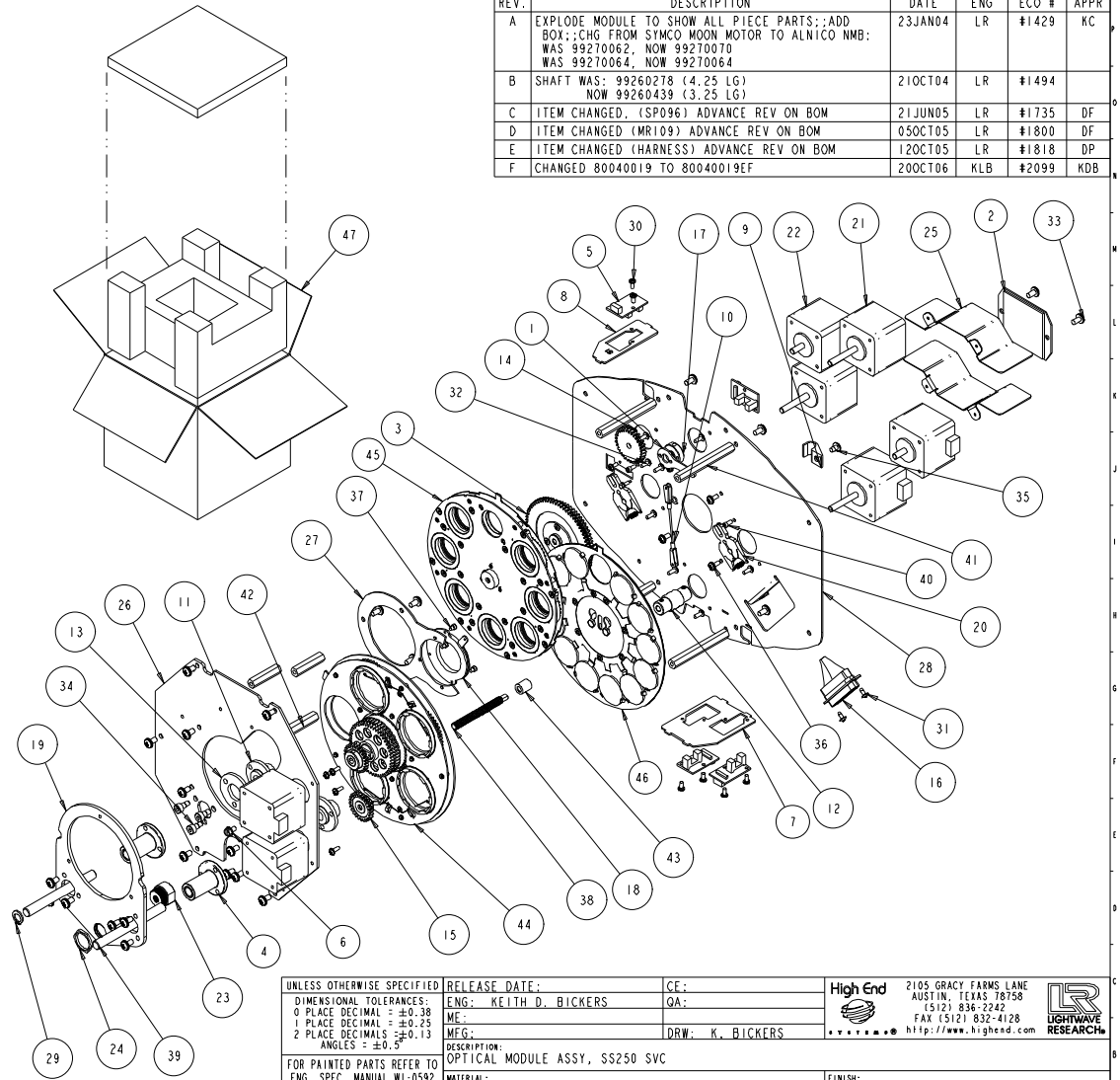
10/26/2006

Issued By: Lee Fredrickson

ITEM NO.	QTY.	FILENAME	PART NO.	REV	DESCRIPTION
47	1	NA	99320106		BOX, OPTICAL MODULE W/PACKING ST2 SP2
46	1	TB247	80190026	C	WHEEL, COLOR TB/TR/STS250
45	1	TBA209	80200042	-	WHEEL, METAL LITHO STS250
44	1	TB469	80190075	-	WHEEL, EFFECTS ASSY STS250 (METAL)
43	1	SY325	85000171	B	STOP, HOMING DRIVE SCREW
42	3	SY303	90702123	B	STANDOFF, IRIS MOUNT, SS 250
41	4	SY311	90702124	A	STANDOFF, HEX OPTICAL MODULE SS 250
40	2	SCREW4-40AC0250BZP	90707036	I	SOCKET, CAP 4-40 X 1/4 BZ PATCH
39	2	SY317	99260439	-	SHAFT, .8MM DIA X 82.5MM
38	1	SP410	90721006	-	SCREW, FOCUS DRIVE, .280 SHANK
37	3	SCREW4-40AC125BZ	90707123	-	SCREW, SOCKET CAP 4-40-1/8, BO
36	4	SCREW6-32PPW0313BZ	90709135	-	SCREW, PHIL PAN 6-32 X 5/16 W/STAR WSHR BZ
35	1	SCREW8-18PPB250BZ	90709024	I	SCREW, PHIL PAN #8 X 1/4 TYPE B SBZ
34	3	SCREW8-32AC18X187BZ	90708014	-	SCREW, 8-32 SOCKET SHOULDER 3/16 X 3/16
33	25	SCREW8-32PPW313BZ	90709136	-	SCREW, 8-32 PHIL PAN 5/16 BZ W/STAR WSHR
32	14	SCREW4-40PPW312BZ	90709118	-	SCREW, 4-40 PHIL PAN 5/16 BZ SEMS
31	2	SCREW4-20PTB250BZ	90709114	-	SCREW, 4-20 X .25 PHIL LOW TRUSS PLASTITE
30	8	SCREW4-20PP250SZ	90709129	-	SCREW, #4 PHIL PAN 1/4 SZ
29	1	RING_312EXS	90701184	-	RING, RETAINING, GROOVELESS 5/16
28	1	SY127	80071282	E	PLATE, MID SUPPORT, STUDIO SPOT 250
27	1	SY133	99260223	A	PLATE, IRIS MOUNT SS 250
26	1	SY187	80071473	C	PLATE, FRONT GARLOCK BEARING SP2
25	2	SY174	80071338	D	PARTITION, HOT MIRROR COATED S 250
24	1	NUT58-24LPS	90703053	-	NUT, PANEL MOUNT 5/8-24 X 3/32 BRASS
23	1	SP096	90703052	D	NUT, LEAD SCREW, 1/4-16 4 START
22	4	MR109_02	99270070	B	MOTOR, STEP 2PH S17 02V ALNICO NMB
21	3	MR109_04	99270072	B	MOTOR, STEP 2PH S17 01V ALNICO NMB
20	2	TB375	80140021	-	MOTOR BRAKE ASSEMBLY
19	1	SY125	99260215	A	LENS TUBE PLATEN, SS 250
18	1	SY408	99290020	-	IRIS, 30MM, SS 250
17	1	SP281	99400022	-	HUB, DIM/STROBE FLAGS
16	1	SY429	90409050	B	HARNESS, FRONT HEAD MOTOR SS 250
15	2	TB354	99430009	-	GEAR, DRIVE, W/INSERT, PLASTIC
14	1	TB358	99430012	-	GEAR, DRIVE W/INSERT LITHO PLASTIC
13	1	SW435	90701157	A	GASKET SHAFT SUPPORT
12	1	TB371	90701137	B	COUPLER, BONDED RUBBER 50 DUR EPDM BLACK
11	2	SW307	99260295	A	COLLAR, SHAFT MOUNTING
10	1	SY407	99290021	-	CLEVIS ASSY, IRIS ACTUATOR, SS 250
9	1	CLAMP_380HALF_NY	90410071	-	CLAMP, HALF 3/8 NYLON BLK, .203 MNT
8	1	SY117	99260218	A	BRACKET, SINGLE SENSOR, SS-250
7	1	SY118	99260220	B	BRACKET, DUAL SENSOR, SS 250
6	1	SCREW6-32SHW0250SZ	90704034	I	BOLT, HEX SLOT INDENTED WASHER SZ 6-32 X 1/4
5	4	TB090	80040019EF	I	BOARD, SENSOR ASSY TECHNOBEAM
4	2	SWA007	80570010	A	BEARING/HOUSING, ASSY LINEAR SLIDE SB
3	1	TBA203	99430087	A	ASSY, TRANSFER GEAR/72 TOOTH GEAR
2	1	SYA021	80580025	-	ASSY, HOT MIRROR STC250/STS250
1	1	SY149	99290019	B	ARM, IRIS ACTUATOR, SS 250

BILL OF MATERIALS

REV.	DESCRIPTION	DATE	ENG	ECO #	APPR
A	EXPLODE MODULE TO SHOW ALL PIECE PARTS.;ADD BOX.;CHG FROM SYMCO MOON MOTOR TO ALNICO NMB; WAS 99270062, NOW 99270070 WAS 99270064, NOW 99270064	23JAN04	LR	#1429	KC
B	SHAFT WAS: 99260278 (4.25 LG) NOW 99260439 (3.25 LG)	21OCT04	LR	#1494	
C	ITEM CHANGED. (SP096) ADVANCE REV ON BOM	21JUN05	LR	#1735	DF
D	ITEM CHANGED (MR109) ADVANCE REV ON BOM	05OCT05	LR	#1800	DF
E	ITEM CHANGED (HARNESS) ADVANCE REV ON BOM	12OCT05	LR	#1818	DP
F	CHANGED 80040019 TO 80040019EF	20OCT06	KLB	#2099	KDB



UNLESS OTHERWISE SPECIFIED DIMENSIONAL TOLERANCES: 0 PLACE DECIMAL = ±0.38 1 PLACE DECIMAL = ±0.25 2 PLACE DECIMALS = ±0.13 ANGLES = ±0.5°	RELEASE DATE: ENG: KEITH D. BICKERS ME: MFG: DRAW: K. BICKERS	CE: QA: MATERIAL: FINISH: NA	High End 2105 GRACY FARMS LANE AUSTIN, TEXAS 78758 (512) 836-2242 FAX (512) 832-4128 http://www.highend.com	LR LIGHTWAVE RESEARCH
FOR PAINTED PARTS REFER TO ENG. SPEC. MANUAL W1-0592	DESCRIPTION: OPTICAL MODULE ASSY, SS250 SVC	DESCRIPTION: OPTICAL MODULE ASSY, SS250 SVC	PART NO. 80570014	DRAWING NO. SYA081
MIN. DRAFT	INTERPRET DIMENSIONS PER ASME Y14.5M-1994	SI METRIC A1	DO NOT SCALE	SCALE: 0.500
MIN. RADII	THIRD ANGLE PROJECTION	DIMENSIONS ARE IN MILLIMETERS	SHEET: 1 OF 1	REV. F
FLATNESS				
THICKNESS				
VOLUME				

PROPRIETARY NOTICE:
THIS DOCUMENT CONTAINS CONFIDENTIAL AND PROPRIETARY INFORMATION OF HIGH END SYSTEMS INC., (ALSO DBA LIGHTWAVE RESEARCH) AND IS GIVEN TO THE RECEIVER IN CONFIDENCE. THE RECEIVER ACCEPTS AND AGREES THAT, EXCEPT AS AUTHORIZED BY HIGH END SYSTEMS, THE RECEIVER WILL NOT PERMIT THE USE OF THE DOCUMENT OR ANY COPY THEREOF, OR THE INFORMATION THEREIN, WILL NOT COPY OR PERMIT COPYING THE DOCUMENT WILL NOT DISCLOSE TO OTHERS EITHER THE DOCUMENT OR THE INFORMATION THEREIN, AND WILL UPON COMPLETION OF THE NEED TO RETAIN THE DOCUMENT, OR UPON DEMAND, RETURN THE DOCUMENT WITHOUT RETAINING ANY OF THE INFORMATION CONTAINED THEREIN IN ANY FORM WHATSOEVER.