



## Installation Instructions

**Subject: Wide Angle Lens Modification**

**Product(s): Studio Spot 575**

**Models Purchased before 6/23/04    Date: 10/27/05**

The wide angle lens inner set screws need to be checked frequently due to the risk of the lens disassembling. A black plastic clamp was added to the lens assembly to prevent the lens from falling out of the fixture if the set screws loosened. Use the following procedure to modify the lens assembly.

### Before You Begin

Please note the following warnings and cautions before performing the procedure outlined in this Installation Instruction.

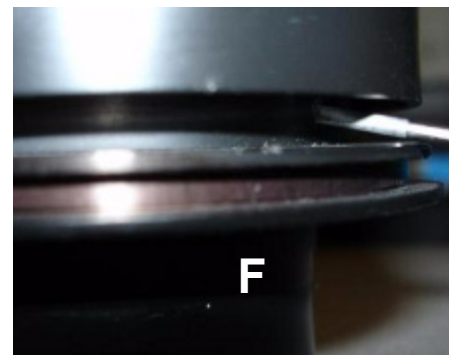
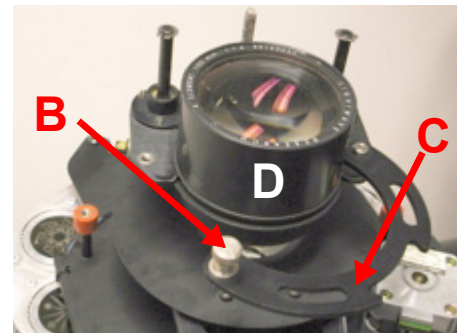


**Warnings: Disconnect power before servicing.**

**Equipment surfaces may reach temperatures up to 130° C (266° F). Allow the fixture to cool 15 minutes before handling.**

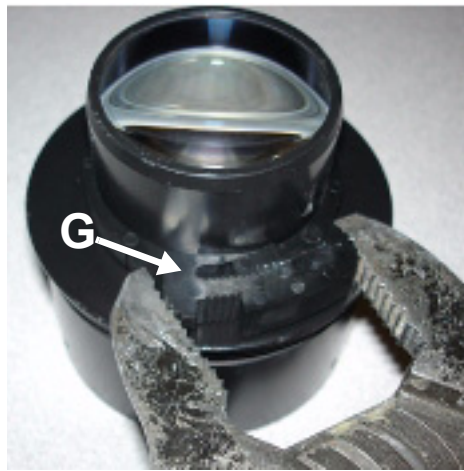
### To Access the Lens

1. Unlatch(A) and remove the Belzel from the fixture head.
2. Loosen the lens bracket thumb screw (B) and swing the bracket (C) open.
3. Lift out the lens (D).
4. Use a small screwdriver to remove the 3 outer lens housing set screws (E).
5. Unscrew outer lens housing by hand just enough to expose the 3 internal set screws at the bottom of the outer lenshousing.
6. Insert a small screwdriver to tighten internal set screws (F).
7. Tighten outer lens housing by hand.
8. Reinstall and tighten outer lens housing set screws.



9. If your lens has the black plastic retainer clip (G), ensure that it is tight enough to where it can not be turned by hand. If needed, use a channel lock pliers to tighten the plastic clamp

**If the plastic retainer clip is damaged or not present, contact High End Systems to request a metal replacement clamp (H).  
P/N 90701367**



10. Replace lens on fixture.  
11. Close bracket and tighten thumbscrew.  
12. Replace bezel.

If you experience any complications or have any questions regarding these installations, contact the High End Systems Service Hotline at 1.800.890.8989 to speak with a technician.