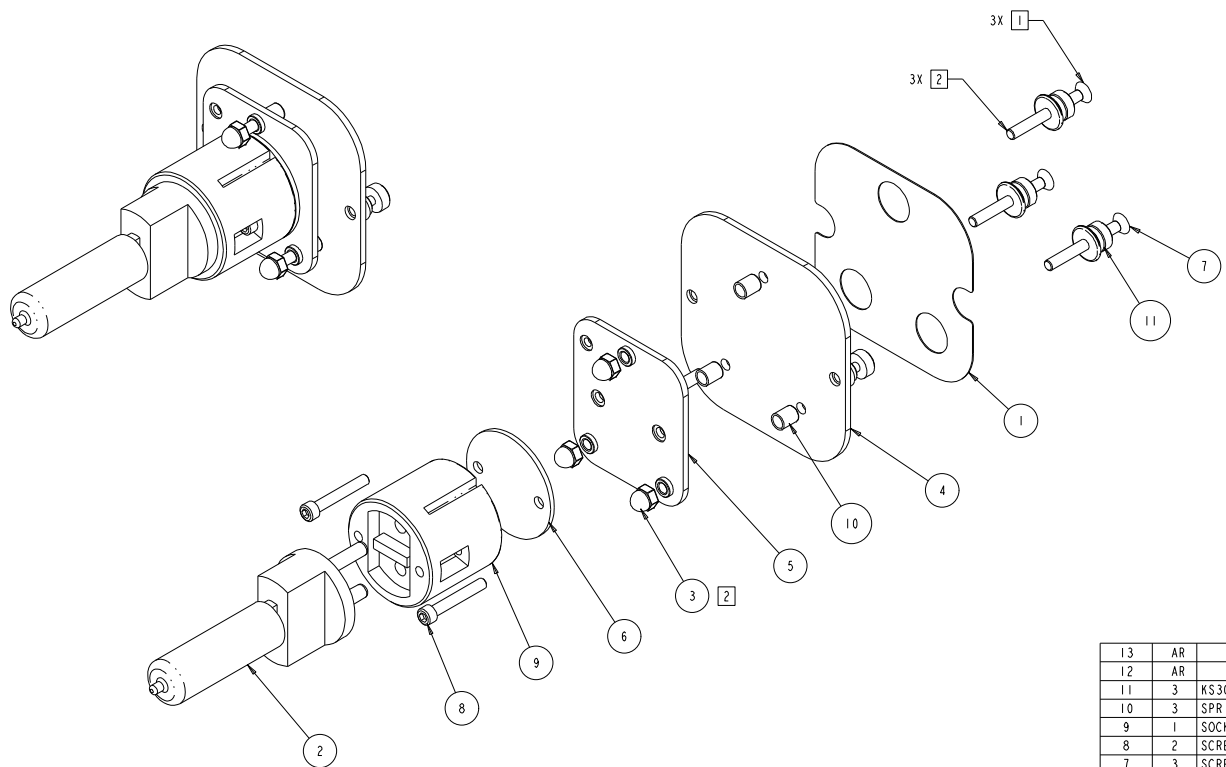


REV.	DESCRIPTION	DATE	ENG	ECO #	APPR
1	CREATE DRAWING	05APR06	M BELL		



- NOTES:
1. APPLY LOCTITE PRIMER AND THREADLOCKER TO THE THREADS AT THE BASE OF THE SCREW HEAD ONLY. NO THREADLOCKER ALLOWED ON ANY THREADS THAT ENGAGE THE LAMP ADJUST PLATE.
 2. APPLY LOCTITE PRIMER AND THREADLOCKER TO ACORN NUT AND SCREW ENGAGEMENT THREADS ONLY. NO LOCTITE ALLOWED ON SCREW THREADS BELOW ACORN NUT.

LAMP, 1000 WATT HALOGEN, 3200K, 100 VOLT	55030078
LAMP, 1000 WATT HALOGEN, 3200K, 115 VOLT	55030071
LAMP, 1000 WATT HALOGEN, 3200K, 230 VOLT	55030072
LAMP, 1000 WATT HALOGEN, 3200K, 240 VOLT	55030079

ITEM NO.	QTY.	FILENAME	PART NO.	REV	DESCRIPTION
13	AR	NA	99250032		LOCTITE 7649 PRIMER
12	AR	NA	99250033		LOCTITE THREADLOCKER 266, HI-TEMP
11	3	KS304	80071892	B	THUMBSCREW, LAMP ADJUST, KNURLED
10	3	SPRING_COMPRESSION	90701210		SPRING, COMPRESSION, .30 OD x 1.0 L SS
9	1	SOCKET_G22_LAMP	99150023		SOCKET, LAMP G22, 20 AMP 350C
8	2	SCREW10-32CPI125L	90707124		SCREW, SOCKET CAP 10-32 X 1.25 IN. SS MS
7	3	SCREW10-32PF175SS	90711056		SCREW, PHIL FLAT HEAD SS 10-32 X 1.75
6	1	KS157	99080273		PLATE, SPACER, LAMP SUPPORT S-CMD-H
5	1	KS124	99080269		PLATE, LAMP ADJUST, S-CMD
4	1	KS125	80071884		PANEL, LAMP ACCESS, S-CMD
3	3	NUT10-32ACORN	90703016		NUT, ACORN NUT 10-32 LOW CROWN SZ
2	1	1000W_7002Y_LAMP	SEE TABLE	I	LAMP, TUNGSTEN/HALOGEN, PHILIPS 7002Y
1	1	KT453	99310427		LABEL, LAMP ADJUST CAP, S-CMD-H

UNLESS OTHERWISE SPECIFIED: RELEASE DATE: CE: HIGH END 2105 GRACY FARMS LANE AUSTIN, TEXAS 78758 (512) 836-2242 FAX (512) 832-4128 http://www.highend.com

FINISH: NA

FOR PAINTED PARTS REFER TO ENG. SPEC. MANUAL WI-0582 MATERIAL: CHARTED

ALL COMPONENTS, MATERIALS AND FINISHES TO BE R6HS COMPLIANT

MIN. DRAFT: INTERPRET DIMENSIONS PER ASME Y14.5M-1994 THIRD ANGLE PROJECTION DIMENSIONS ARE IN MILLIMETERS

MIN. RADI: SI METRIC A1

FLATNESS: PART NO. N/A DRAWING NO. KTA027 REV. 1

THICKNESS: DO NOT SCALE SCALE: 1:000 SHEET: 1 OF 1

VOLUME: LAMP ADJUST ASSEMBLY, S-CMD-H

PROPRIETARY NOTICE: THIS DOCUMENT CONTAINS CONFIDENTIAL AND PROPRIETARY INFORMATION OF HIGH END SYSTEMS INC., (ALSO DBA LIGHTWAVE RESEARCH) AND IS GIVEN TO THE RECEIVER IN CONFIDENCE. THE RECEIVER ACCEPTS AND AGREES THAT, EXCEPT AS AUTHORIZED BY HIGH END SYSTEMS, THE RECEIVER WILL NOT PERMIT THE USE OF THE DOCUMENT OR ANY COPY THEREOF OR THE INFORMATION THEREIN, WILL NOT COPY OR PERMIT COPYING THE DOCUMENT OR THE INFORMATION OR THE INFORMATION THEREIN, AND WILL UPON COMPLETION OF THE NEED TO RETAIN THE DOCUMENT, OR UPON DEMAND, RETURN THE DOCUMENT WITHOUT RETAINING ANY OF THE INFORMATION CONTAINED THEREIN IN ANY FORM WHATSOEVER.