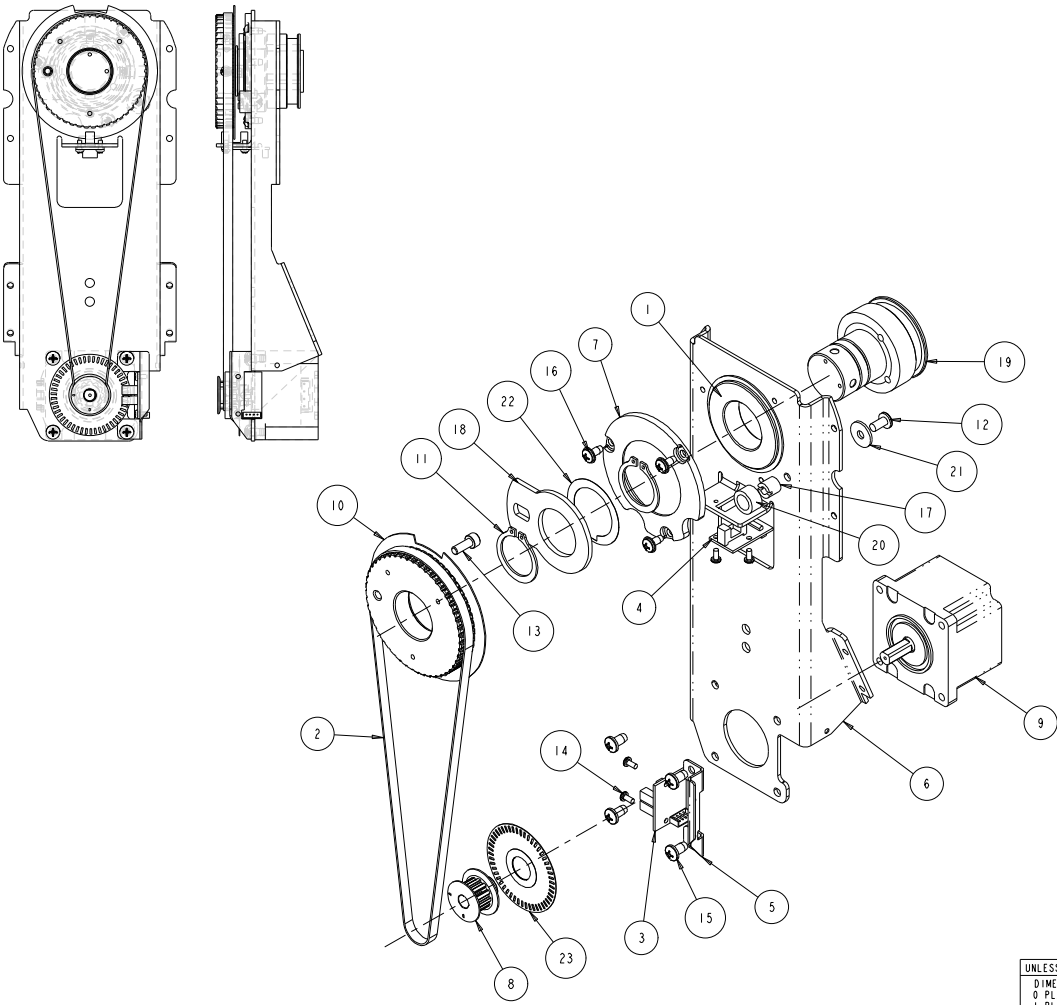


KTA013

REV.	DESCRIPTION	DATE	ENG	ECO #	APPR
I	CREATE DRAWING	21APR06	LR		



ITEM NO.	QTY.	FILENAME	PART NO.	REV	DESCRIPTION
23	1	CS505	99180029	.	WHEEL, OPTICAL ENCODER, LEXAN 50 SLOTS
22	1	WP207	90706058	C	WASHER, SPRING STAINLESS STC
21	1	WASHER10FLT203X625SS	90706056	I	WASHER, FLAT #10 .203X.625X.056-071 SS
20	1	SY416	90717022	I	TUBING, 3/8 SAE 30RT FUEL/EMIS
19	1	KS302	99140020	-	TUBE, TILT GEAR SIDE, S-CMD
18	1	SY115	99260192	B	STOP, TILT, SP2 ST2
17	1	SY310	90702120	A	STANDOFF .375 OD, 10-32 THD SLOTTED
16	3	SCREW8-18PPW380B	90709142	-	SCREW,#8 PHIL PAN 3/8 B W/STAR WASHER
15	4	SCREW10-14PPF0380	90709124	I	SCREW, PHIL PAN PLASTITE 10-14 X 3/8
14	4	SCREW4-20PP250S2	90709129	-	SCREW, #4 PHIL PAN 1/4 S2
13	1	SCREW10-32ACS00BZ	90707033	.	SCREW, 10-32 SOCKET CAP 1/2 BZ PATCH
12	1	SCREW10-32PP380SS	90709148	-	SCREW, 10-32 PHIL PAN 3/8 SS
11	2	RING1000EXT	90701071	I	RETAINER, RING ZINC YELLOW (1.00 ID)
10	1	KTA010	NA	I	PULLEY, 48T / FLANGE ASSY, S-CMD
9	1	MRO60	99270035	-	MOTOR, STEP 3PH S60 22.5MM SHAFT JS
8	1	SP253	99430017	A	GEAR, PINION PAN/TILT STUDIO SPOT
7	1	SP465	99260447	A	CAP BRG SUPRT 910PPG, DIECAST, MACHINED
6	1	KT112	99260487	-	BRACKET, TILT BRG, GEAR SIDE, S-CMD-H
5	1	SY157	99260225	A	BRACKET, ENCODER SENSOR, SP2 ST2
4	1	TB090	80040019	I	BOARD, SENSOR ASSY TECHNOBEAM
3	1	SY415	80010103	I	BOARD, DUAL SENSOR 2 ASSY
2	1	BELT_25W_117TOOTH	99360046	.	BELT, TIMING BELT .2P 1/4"W 117 TOOTH
1	1	9106PPG	90719007	I	BEARING, TECH 6006-2RSNR STC

BILL OF MATERIALS

UNLESS OTHERWISE SPECIFIED	RELEASE DATE:	CE:	High End	2105 GRACY FARMS LANE AUSTIN, TEXAS 78758	
DIMENSIONAL TOLERANCES:	ENG:	OA:		(512) 836-2242	
0 PLACE DECIMAL = ±0.38	ME:			FAK (512) 832-4128	
1 PLACE DECIMAL = ±0.25	MEG:	DRW: L.ROESSLER		http://www.highend.com	
2 PLACE DECIMALS = ±0.13	ANGLES = ±0.5°	DESCRIPTION:	ASSY, TILT MOTOR BRACKET		

FOR PAINTED PARTS REFER TO ENG. SPEC. MANUAL WI-0592	MATERIAL:	FINISH:
ALL COMPONENTS, MATERIALS AND FINISHES TO BE R6HS COMPLIANT	CHARTED	NA
MIN. DRAFT	INTERPRET DIMENSIONS PER ASME Y14.5M-1994	PART NO.
MIN. RADIUS	THIRD ANGLE PROJECTION	NA
FLATNESS	DIMENSIONS ARE IN MILLIMETERS	DRAWING NO.
THICKNESS		KTA013
VOLUME		REV.
		I
	DO NOT SCALE	SCALE: 0.630
		SHEET: 1 OF 1

SCALE 0.750

PROPRIETARY NOTICE:  
THIS DOCUMENT CONTAINS CONFIDENTIAL AND PROPRIETARY INFORMATION OF HIGH END SYSTEMS INC., (ALSO DBA LIGHTWAVE RESEARCH) AND IS GIVEN TO THE RECEIVER IN CONFIDENCE. THE RECEIVER ACCEPTS AND AGREES THAT, EXCEPT AS AUTHORIZED BY HIGH END SYSTEMS, THE RECEIVER WILL NOT PERMIT THE USE OF THE DOCUMENT OR ANY COPY THEREOF OR THE INFORMATION THEREIN, WILL NOT COPY OR PERMIT COPYING THE DOCUMENT OR THE INFORMATION THEREIN, AND WILL UPON COMPLETION OF THE NEED TO RETAIN THE DOCUMENT, OR UPON DEMAND, RETURN THE DOCUMENT WITHOUT RETAINING ANY OF THE INFORMATION CONTAINED THEREIN IN ANY FORM WHATSOEVER.