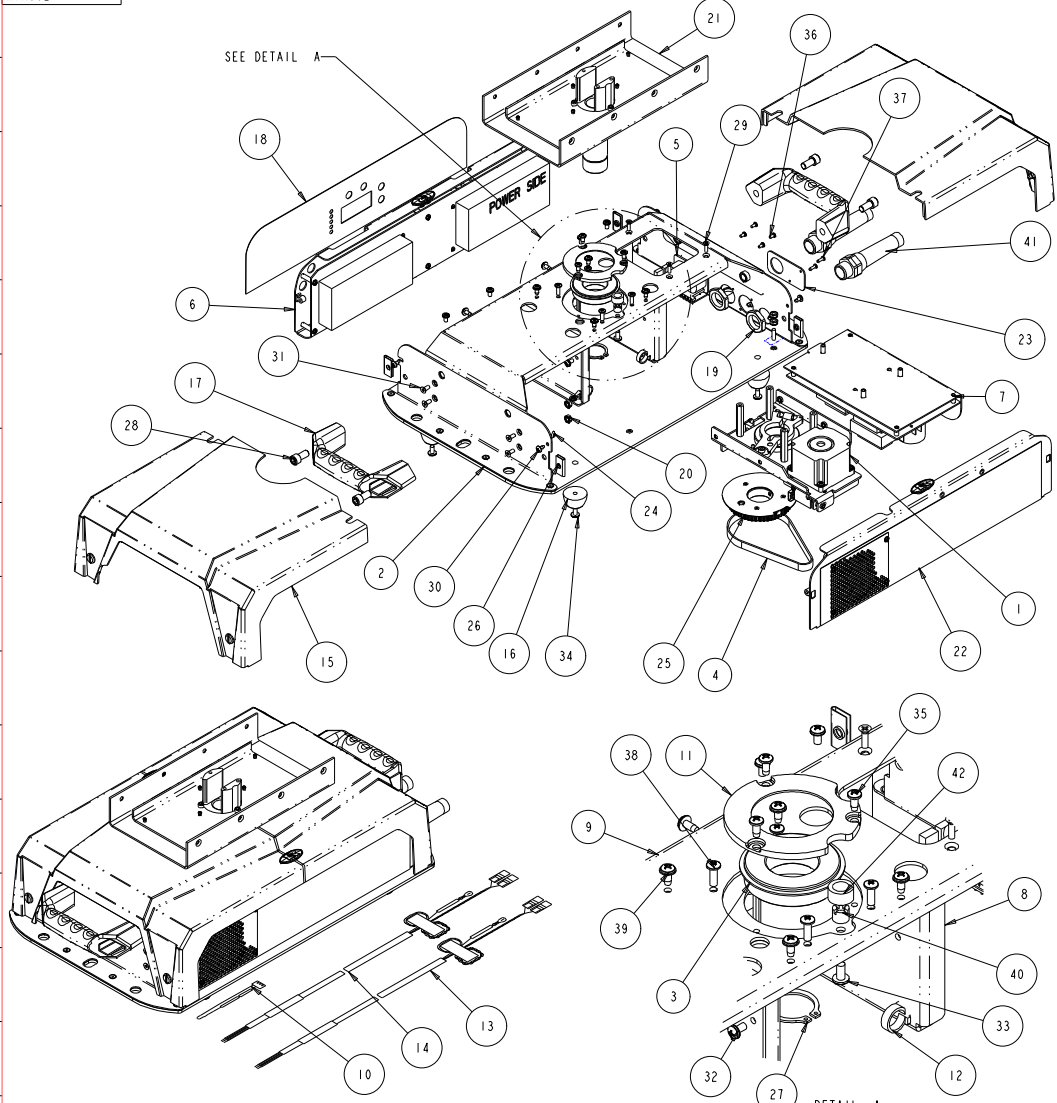


KTA002

REV.	DESCRIPTION	DATE	ENG	ECO #	APPR
2	UPDATE HARDWARE, VIEW	20APR06	LR		



ANCILLARY DRAWING

QTY	SYMBOL	DESCRIPTION	REV	DATE	DESCRIPTION
42	1	SY416	90717022	1	TUBING, 3/8 SAE 30R7 FUEL/EMIS
41	2	STRAIN_RELIEF	90414008	-	STRAIN RELIEF, POWERGRIP BLK CL/CX
40	1	SW333	90702154	-	STANDOFF, 10-32 X .375 OD THD SLOTTED
39	6	SCREW8-18PPW380B	90709142	-	SCREW, #8 PHIL PAN 3/8 B W/STAR WASHER
38	4	SCREW8-32PP500BZ	90709090	1	SCREW, PHIL PAN 8-32 X 1/2 M/S BZ
37	2	SCREW4-20PPB375BZ	90709138	-	SCREW, PHIL PAN 4-20 X 3/8, TYPE B, BZ
36	4	SCREWM3PP06BZ	90709143	-	SCREW, M3 PHIL PAN 6MM BZ
35	3	SCREW8-18PPB380BZ	90709128	-	SCREW, #8 PHIL PAN 3/8 B TYPE BZ
34	4	SCREW10-32PPW0313SZ	90709181	-	SCREW, 10-32 PHIL PAN 5/16 MS CS SZ SWE
33	1	SCREW10-32PP380SS	90709148	-	SCREW, 10-32 PHIL PAN 3/8 SS
32	12	SCREW8-32PPW313BZ	90709136	-	SCREW, 8-32 PHIL PAN 5/16 BZ W/STAR WSHR
31	4	SCREW8-32PFU380S	90709141	-	SCREW, 8-32 PHIL FLAT UC 3/8 BZ PATCH
30	4	SCREW6-32PHIL-TRUSSX312BZ	90711048	-	SCREW, 6-32 PHIL TRUSS 5/16 CS BZ PATCH
29	3	SCREW6-32PF0500SZ	90711047	-	SCREW, 6-32 PHIL FLAT 1/2 SZ
28	4	SCREWS_16-24AC625N	90707028	-	SCREW 5/16-24 SOCKET CAP 5/8 ALLOY NICKEL
27	1	RING1000EXT	90701071	1	RETAINER, RING ZINC YELLOW (1.00 ID)
26	4	RECEPT25OCLIP-ON	90701099	-	RECEPTICLE, CLIP-ON NARROW FLANGE
25	1	KTA010	NA	1	PULLEY, 48T / FLANGE ASSY, S-CMD
24	2	PLUG250SNAPIN	90724010	-	PLUG, .093 X 11/32 OD NYLON BLACK
23	1	KT100	80071895	A	PLATE, ADAPTER, DIMMER CORD S-CMD
22	1	KTA011	NA	2	PANEL ASSY, FAN SIDE S-CMD-H
21	1	KSAD22	NA	2	PAN TUBE ASSY, S-CMD
20	6	NUT8-32KEP	90703023	-	NUT, KEPS 8-32 KEPS NUT SZ
19	2	NUT500NPT-NYLON	90703030	-	NUT, 1/2 NPT STRAIN RELIEF CYBER, CX
18	1	KT452	99310426	-	LABEL, FRONT PANEL, S-CMD-H
17	2	KS205	90720009	A	HANDLE, ELECTRONIC ENCLOSURE S-CMD
16	4	RUBBER_FT	90410089	-	FOOT, RUBBER STC/NH LONG
15	2	KSAD33	NA	1	COVER ASSY, ELECTRONIC ENCLOSURE
14	1	KT712	90409245EF	-	CORD, LAMP DIMMER 16/3 S-CMD-H
13	1	KST08	90409240	-	CORD, AC POWER ASSY 16/3 S-CMD
12	2	WIRE_TIE_SNAP	90701082	-	CLIP, SNAP (.50 ID)
11	1	SP465	99260447	A	CAP BRG SUPRT 910PPG, DIECAST, MACHINED
10	1	KT711EF.1	90409245EF	-	CABLE, SENSOR JUMPER S-CMD SENS 1
9	1	SW150	99260286	C	BRACKET, PAN SUPPORT
8	1	SW155	99260285	D	BRACKET, PAN BEARING MOUNT STUDIO BEAM
7	1	SWA136	80050049	-	BOARD, ASSY MOTOR POWER SUPPLY SB TESTED
6	1	KSAD25	80010198	2	BOARD, ASSY LOGIC S-CMD TESTED
5	1	SYA025	-	-	BOARD ASM, 5-PIN XLR
4	1	BELT2P_375W_68TOOTH	99360006	-	BELT, TIMING, 2P 3/8"W 6T TOOTH STC
3	1	9106PPG	90719007	1	BEARING, TECH 6006-2RSNR STC
2	1	SWA058	80071435	B	BASEPLATE / SIDE PANEL, ASSY
1	1	SWA176	NA	6	ASSY, LOWER BEARING, STUDIO BEAM

BILL OF MATERIALS

UNLESS OTHERWISE SPECIFIED:	RELEASE DATE:	CE:	High End	2105 GRACY FARMS LANE AUSTIN, TEXAS 78758	
DIMENSIONAL TOLERANCES:	ENG.:	OA:		(512) 836-2242	
0 PLACE DECIMAL = ±0.38	MEG:			FAK (512) 832-4128	
1 PLACE DECIMAL = ±0.25	MEG:	DRW: LARRY R		http://www.highend.com	
2 PLACE DECIMALS = ±0.13	ANGLES = ±0.5°				
FOR PAINTED PARTS REFER TO ENG. SPEC. MANUAL WI-0582	MATERIAL:	FINISH:	ASSY, ELECTRONICS ENCLOSURE S-CMD-H CHARTED NA		
ALL COMPONENTS, MATERIALS AND FINISHES TO BE R6HS COMPLIANT			PART NO. NA DRAWING NO. KTA002 REV. 2		
MIN. DRAFT	INTERPRET DIMENSIONS PER ASME Y14.5M-1994	SI METRIC A1 THIRD ANGLE PROJECTION DIMENSIONS ARE IN MILLIMETERS			
MIN. RADII		DO NOT SCALE SCALE: 0.350 SHEET: 1 OF 1			
FLATNESS					
THICKNESS					
VOLUME					

PROPRIETARY NOTICE:
 THIS DOCUMENT CONTAINS CONFIDENTIAL AND PROPRIETARY INFORMATION OF HIGH END SYSTEMS INC., (ALSO DBA LIGHTWAVE RESEARCH) AND IS GIVEN TO THE RECEIVER IN CONFIDENCE. THE RECEIVER ACCEPTS AND AGREES THAT, EXCEPT AS AUTHORIZED BY HIGH END SYSTEMS, THE RECEIVER WILL NOT PERMIT THE USE OF THE DOCUMENT OR ANY COPY THEREOF OR THE INFORMATION THEREIN, WILL NOT COPY OR PERMIT COPYING THE DOCUMENT, WILL NOT DISCLOSE TO OTHERS EITHER THE DOCUMENT OR THE INFORMATION THEREIN, AND WILL UPON COMPLETION OF THE NEED TO RETAIN THE DOCUMENT, OR UPON DEMAND, RETURN THE DOCUMENT WITHOUT RETAINING ANY OF THE INFORMATION CONTAINED THEREIN IN ANY FORM WHATSOEVER.

DETAIL A
SCALE 0.750