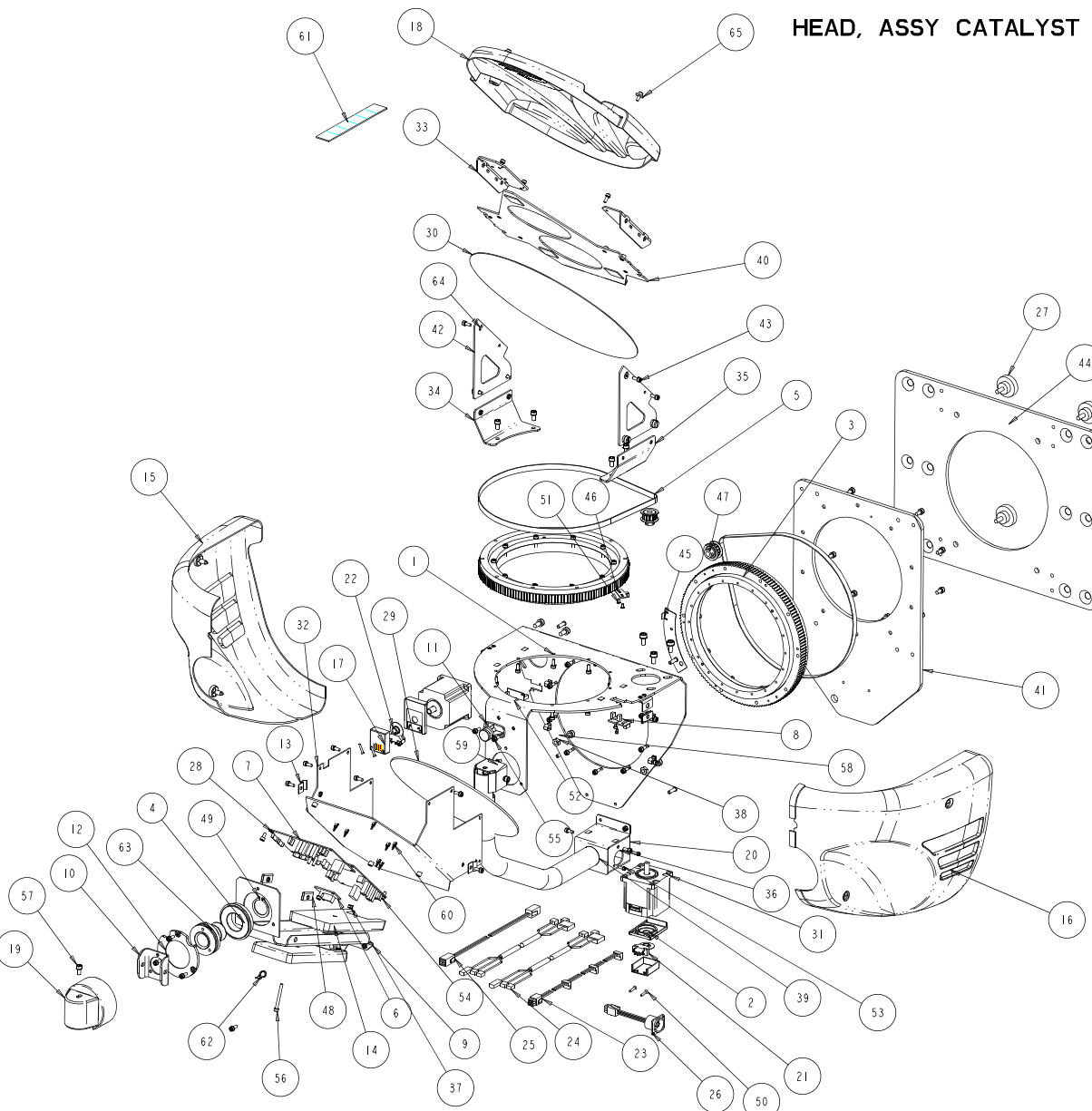


HEAD, ASSY CATALYST



65	2	TB221	90706037	-	WASHER, NYLON BLK .162X.5X.076
64	2	WASHER6FLAT	90706004	-	WASHER, FLAT #6 M/S 15795-805
63	1	SY305	99140008	B	TUBE, TILT MOTOR BRAKE SIDE, S 250
62	1	TIE_WRAP3-4	99330007	I	TIE WRAP 3in. 4in. 10SC BLK
61	1	CM460	90710037	-	TAPE, 3M VHB 4955, 6" X 1" X .080", PERF
60	7	SUPPORT_CRLCBSRE_4_01	90702207	-	STANDOFF, PCB NYLON .250
59	3	SCREW8-32PPW313BZ	90709136	-	SCREW, PHIL PAN 8-32 X 5/16 W/STAR WSHR BZ
58	9	SCREW6AC10BZ	91000610	-	SCREW, M6 SOCKET 10 BZ SEMS
57	16	SCREW5AC10BZ	91000510	I	SCREW, M5 SOCKET CAP 10 BZ SEMS
56	1	SCREW4AC40BZ	91000440	I	SCREW, M4 SOCKET CAP 40 BZ SEMS
55	54	SCREW4AC10BZ	91000410	-	SCREW, M4 SOCKET CAP 10 BZ SEMS
54	2	SCREW4AC8SS	91100408	-	SCREW, M4 SOCKET CAP 08 SS
53	2	SCREW3AC10BZ	91000310	-	SCREW, M3 SOCKET CAP 10 BZ SEMS
52	4	SCREW3AC05T	91060305	-	SCREW, M3 SOCKET CAP 05 TAPTITE
51	3	SCREW3AB06BZ	91010306	-	SCREW, M3 BUTTON 06 BZ NYTEM
50	4	SCREW4-40PF625SBZ	90709134	-	SCREW, 4-40 PHIL FLAT 5/8
49	1	RING1000EXT	90701071	I	RETAINER, RING ZINC YELLOW (1.00 ID)
48	4	CLIP_ON-RECP_NARROW	90701099	I	RECEPTICAL, CLIP-ON NARROW FLANGE
47	2	CM501	99360035	-	PULLEY, 14T 5.08mm PITCH, W/FLANGE
46	1	CM126	99190063	-	PLATE, SENSOR TAB UPPER, CATALYST
45	1	CM109	99190062	-	PLATE, SENSOR TAB LOWER, CATALYST
44	1	CM133	80071753	-	PLATE, PROJECTOR ADAPTER, CATALYST
43	1	CM131	80070371	A	PLATE, OUTER MIRROR, RIGHT
42	1	CM132	80070372	A	PLATE, OUTER MIRROR, LEFT
41	1	CM122	80071719	D	PLATE, FIXTURE MOUNT
40	1	CM123	80071718	A	PLATE, EXTERNAL MIRROR SUPPORT
39	1	CM110	80550007	A	PIPE ASSY, HARNESS_WELDING
38	2	NUTM6KEP	91201206	-	NUT, M6 KEPS
37	1	NUTM4KEP	91201204	-	NUT, M4 KEPS
36	2	NUTM3KEP	91201203	-	NUT, M3 KEPS
35	1	CM129	80070369	B	MOUNT, OUTER MIRROR, SHORT RIGHT
34	1	CM130	80070370	B	MOUNT, OUTER MIRROR, SHORT LEFT
33	2	CM121	80071720	-	MOUNT, MIRROR BEZEL
32	1	CM117	80071716	-	MOUNT, FIRST MIRROR
31	2	MR110	99270042	A	MOTOR, JS KT60LMI-001 3 PHASE
30	1	CM401	99100029	-	MIRROR, ELLIPTICAL, OUTER
29	1	CM400	99100030	-	MIRROR, ELLIPTICAL, INNER
28	2	WASHER6LET	90706006	I	LOCK WASHER, #6 EXTERNAL TOOTH
27	4	KNOB_M6_12_BLK	90410127	-	KNOB, CLAMPING M6 X 12, BLK
26	1	CM710	90409115	-	HARNESS, CATALYST, XLR BOX
25	1	CM705	90409116	-	HARNESS, CATALYST, PIPE 9PIN CON
24	2	CM706	90409117	-	HARNESS, CATALYST, MOTOR DRIVE
23	1	CM709	90409120	-	HARNESS, CATALYST HEAD
22	2	FS524	90306068	-	ENCODER, WHEEL / HUB, 500 CPR 5V
21	2	FS523	90306067	-	ENCODER, OPTICAL MODULE, 500 CPR
20	1	CM115	80071734	-	COVER, TUBE ASSY
19	1	CM219	99080199	A	COVER, PIPE PLASTIC
18	1	CM212	99220025	-	COVER, MIRROR
17	2	FS227	99220023	A	COVER, ENCODER, DIE CAST
16	1	CM4018	80110029	A	COVER, ASSY HEAD RIGHT, CATALYST
15	1	CM4017	80110028	A	COVER, ASSY HEAD LEFT, CATALYST
14	2	CM220	85000230	-	COUNTERWEIGHT, HEAD, CATALYST
13	2	CLAMP300_ID_HALF_SS	90701060	-	CLAMP, HALF CABLE SS
12	1	CM225	80071740	-	CAP BEARING SUPPORT 910PPG, DIECAST BLK
11	2	FS205	90724012	-	BUTTON, COVER, TOP BOX
10	1	CM114	99263109	-	BRACKET, TUBE BEARING, CATALYST
9	1	CM118	80071723	A	BRACE, MAIN SUPPORT
8	2	TB090	80040019	I	BOARD, SENSOR ASSY TECHNOBEAM
7	2	FS708	80010140	-	BOARD, PAN & TILT MOTOR MODULE XS TESTED
6	1	FS703	80060007	-	BOARD, ASSY ME46 TERMINATOR
5	2	CM500	99360034	-	BELT, 5mm HTD PITCH, 190T X 9mm WIDE
4	1	9106PPG	90719007	I	BEARING, TECH 6006-2RSNR STC
3	2	CM4012	90719053	-	BEARING, ASSY, MAIN HEAD SUPPORT, CATALYST
2	2	FS228	80130023	-	BASE, ENCODER, DIE CAST
1	1	CM4022	80450075	-	ASSY, BRACKET, MOTOR MOUNT CATALYST
ITEM NO.	QTY.	FILENAME	PART NO.	REV	DESCRIPTION
BILL OF MATERIALS					