

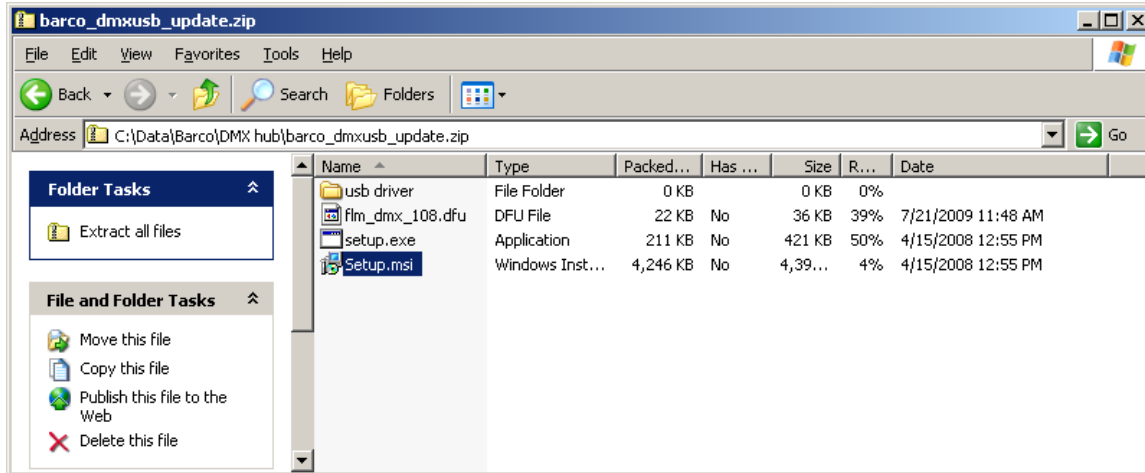
FLM DMX USB firmware update procedure

Equipment required:

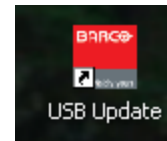
- #1 Philips screwdriver
- USB A-B cable
- Barco_dmxusb_update.zip application
- Windows XP computer

Install DMX update on the Windows XP computer

1. Unzip barco_dmxusb_update.zip to a temporary directory.

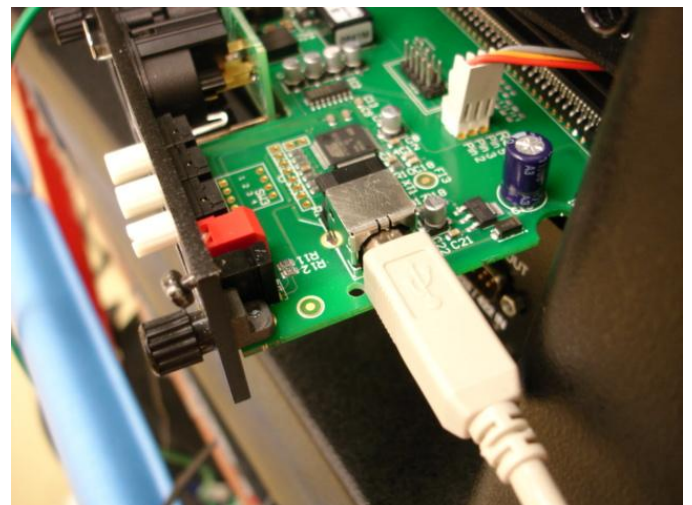


2. Launch Setup.msi and follow the onscreen instructions.
3. The install program will create a desktop icon named USB Update
4. You will have to reboot your computer after installing the USB Update application.
5. This completes installation of the USB Update application



Connect the FLM DMX USB board to your computer.

1. Using the #1 Philips screwdriver, loosen the two screws that retain the DMX USB expansion card, and pull the card out to expose the on board USB connector.



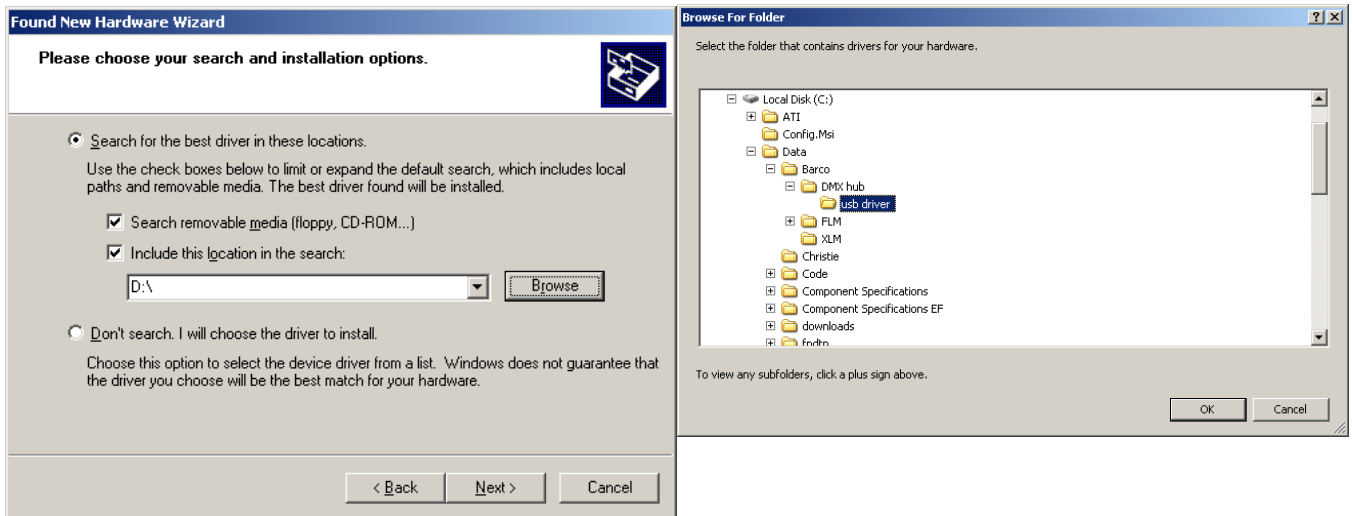
- Address the DMX board to address 900. You may wish to write down the DMX address prior to changing the address to 900.



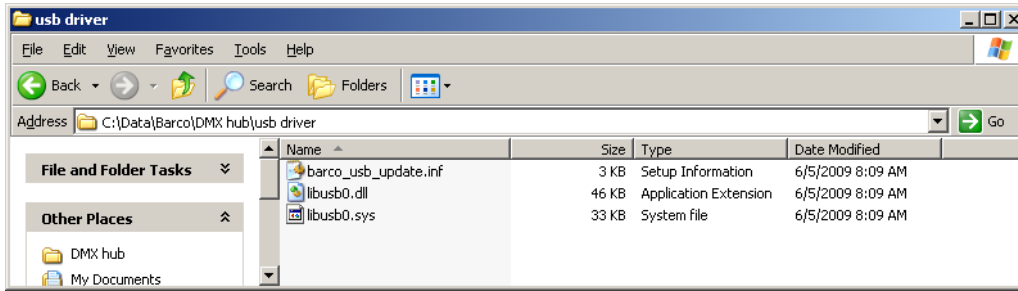
- Plug the USB B connector into the DMX board as shown in step 1.
- When you plug the DMX update board into your computer, the “Found New Hardware Wizard” will launch. Select “Install from a list or specific location”, and press the Next button.



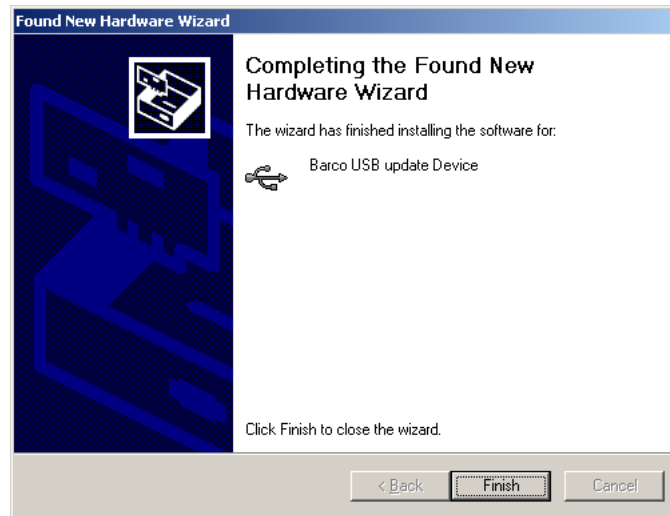
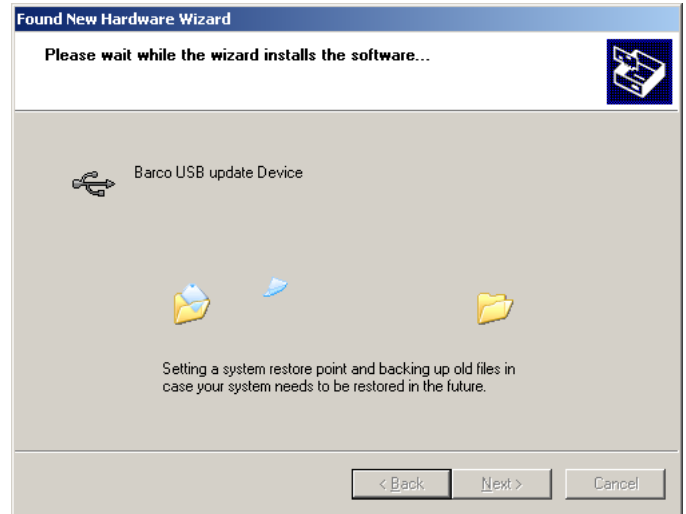
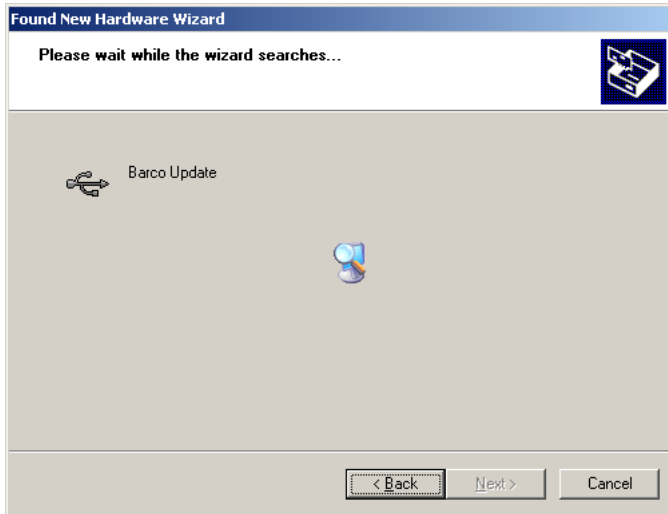
- The “choose your search and installation options” window will launch. Select Search for the best driver in these locations. Check the Include this location in the search box and browse to the temporary folder holding your unzipped barco_dmxusb_update folder.



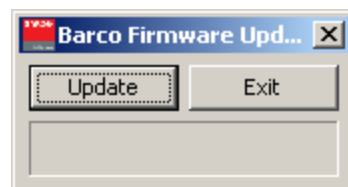
This folder should contain barco_usb_update.inf, libusb0.dll and libusb0.sys.



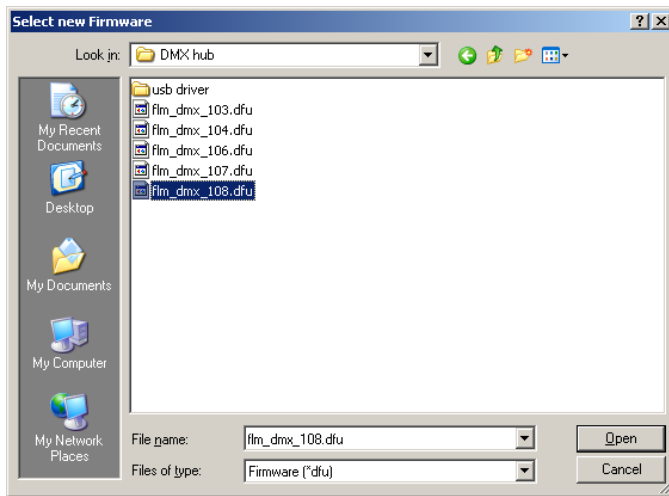
6. Select OK, then click Next in the search and installation options window.
7. The wizard will find the driver and install it, then finish. After the driver is done installing, select the Finish box.



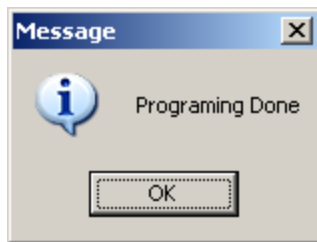
8. Your hardware will then install.
9. Launch the USB Update program by double clicking the USB Update desktop icon. This will launch the USB firmware update application.
10. Select the Update button.



11. Browse to the temporary folder containing flm_dmx_108.dfu, and select open.



12. The progress bar will indicate progress of the update, then, the programming done message will appear. This completes updating firmware on the FLM USB DMX board. Click OK and then exit the USB Update application.



Reinstall the FLM DMX board

1. Unplug the USB B connector from the DMX board.
2. Push the FLM DMX board back into the FLM backplane. Be certain not to pinch the serial data cable. You may have to push it out of the way of the backplane connector to ensure that it is not pinched.
3. You should feel the FLM board snap into the backplane connector.
4. Tighten the 2 Philips retaining screws using the #1 Philips screwdriver.
5. Re-address your DMX board to the proper DMX address.