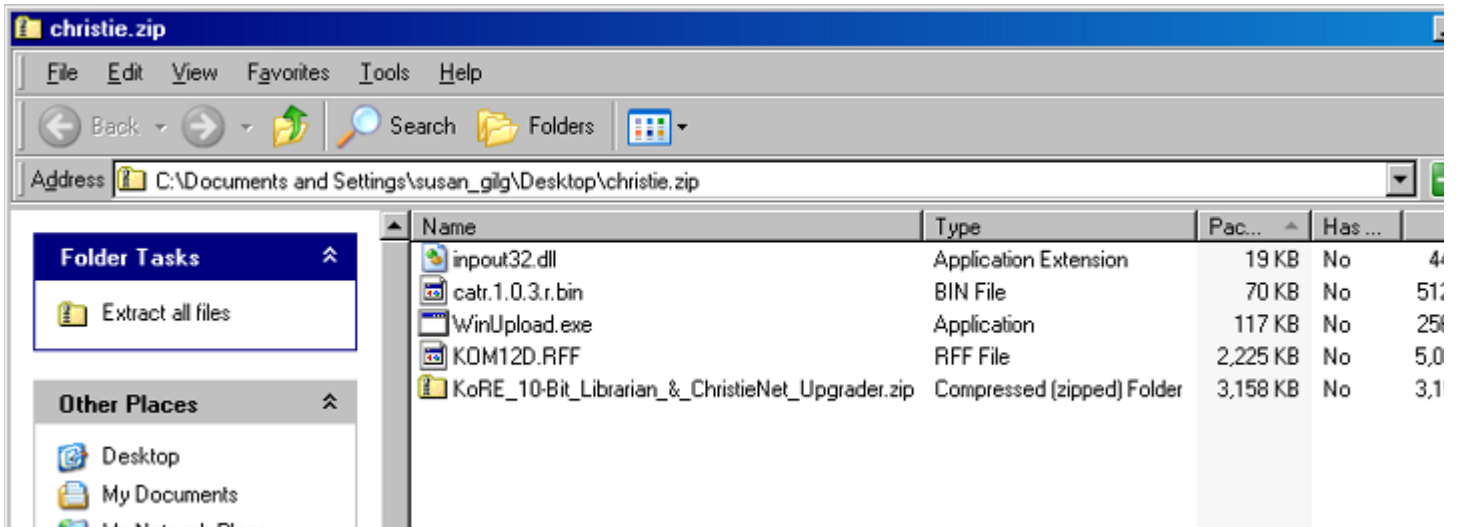


Upgrading Christie Roadster Software

This document describes obtaining and upgrading Christie Roadster projector software for your Roadster Orbital Head fixture.

Download and Install the Kore Librarian.

1. Download the file Christie.zip from the Orbital Head Support page at the High End Systems website: www.highend.com/digital_lighting/orbitalhead.asp
2. Unzip Christie.zip on a Windows XP computer with a serial port. Do not use a computer with a USB serial port. Under Windows XP double click on the Christie.zip file and the explorer will show all the files in the zip folder:



catr.1.0.3.r.bin: The latest Catalyst Roadster Hub software. To be used with the Upload dongle and WinUpload.

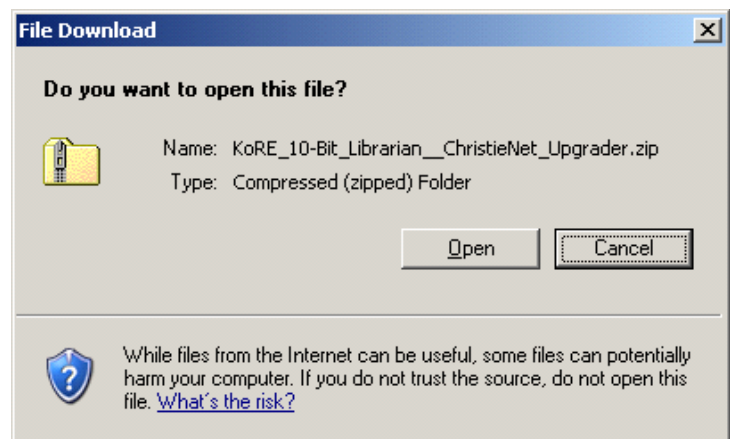
Input32.dll: A dll file for WinUpload. To be placed in the directory with WinUpload.

KOM12D.RFF: Latest projector software from Christie Digital.

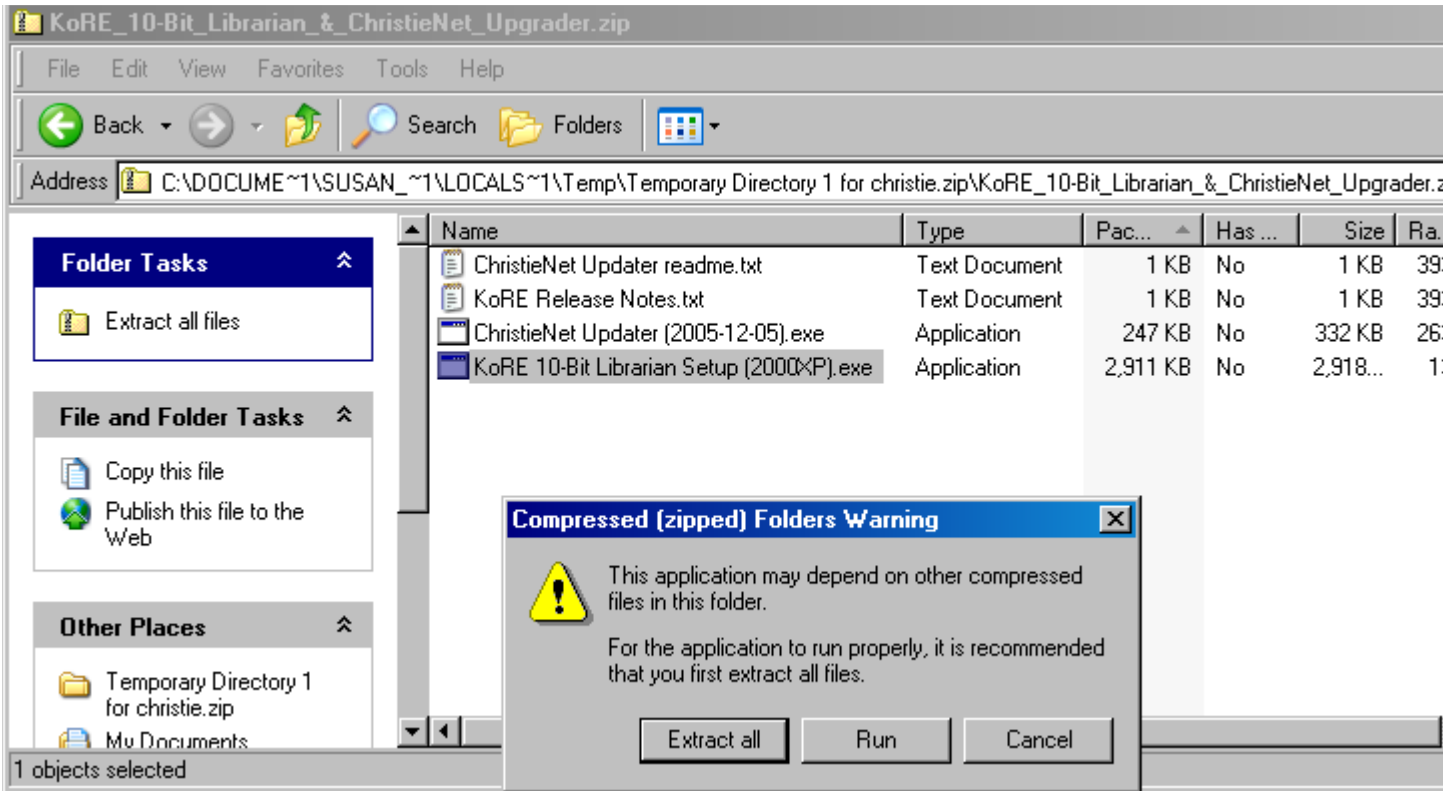
KoRE_10_Bit_Librarian_&_ChristieNet_Upgrader.zip: Installer for Kore librarian, the projector upgrade tool.

WinUpload.exe: Latest version of WinUpload for upgrading firmware on the Catalyst Roadster Hub

3. Double click on the KoRE_10-Bit_Librarian_&_ChristieNet_Upgrader.zip file to uncompress the Christie Kore Librarian installer.



4. Double click on the Kore 10-Bit Librarian Setup (2000XP).exe to unzip these files:
5. Select "Extract all" and unzip all files from the compressed file. This will display the contents of the decompressed folder:



6. Launch the file KoRE 10-Bit Librarian Setup (2000XP).exe and use the Installation Wizard to install KoRE Librarian on your computer.

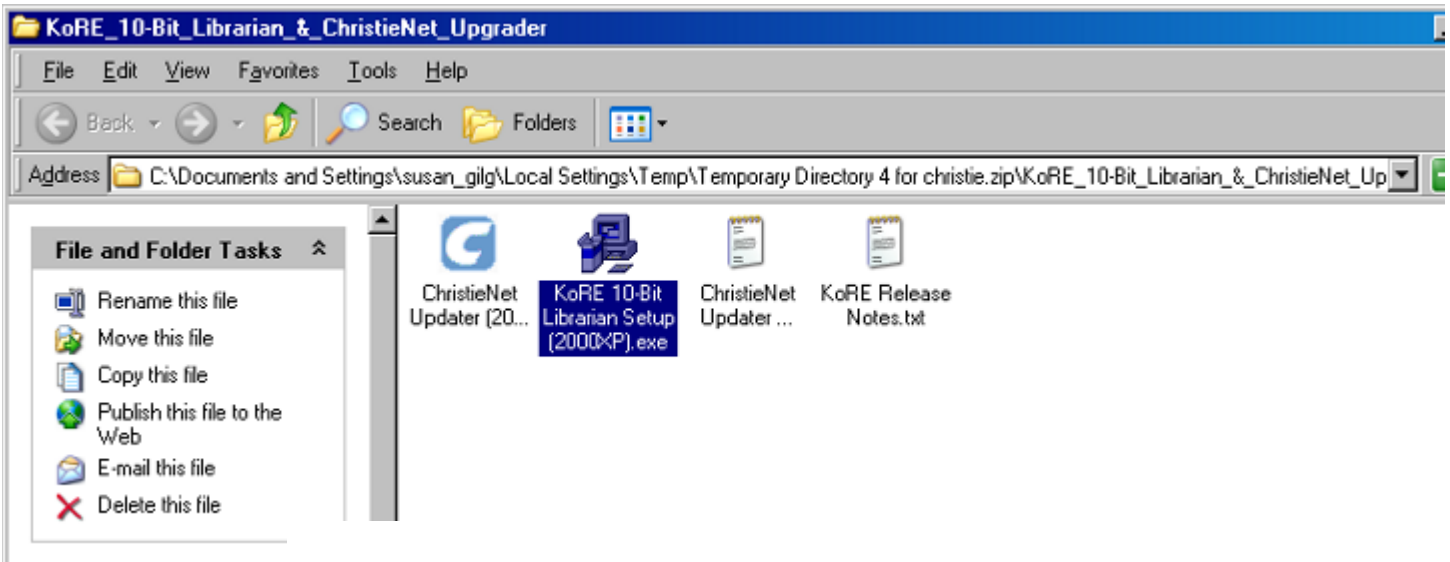
Upgrading the Christie Roadster Software

Before you begin the software upgrade:

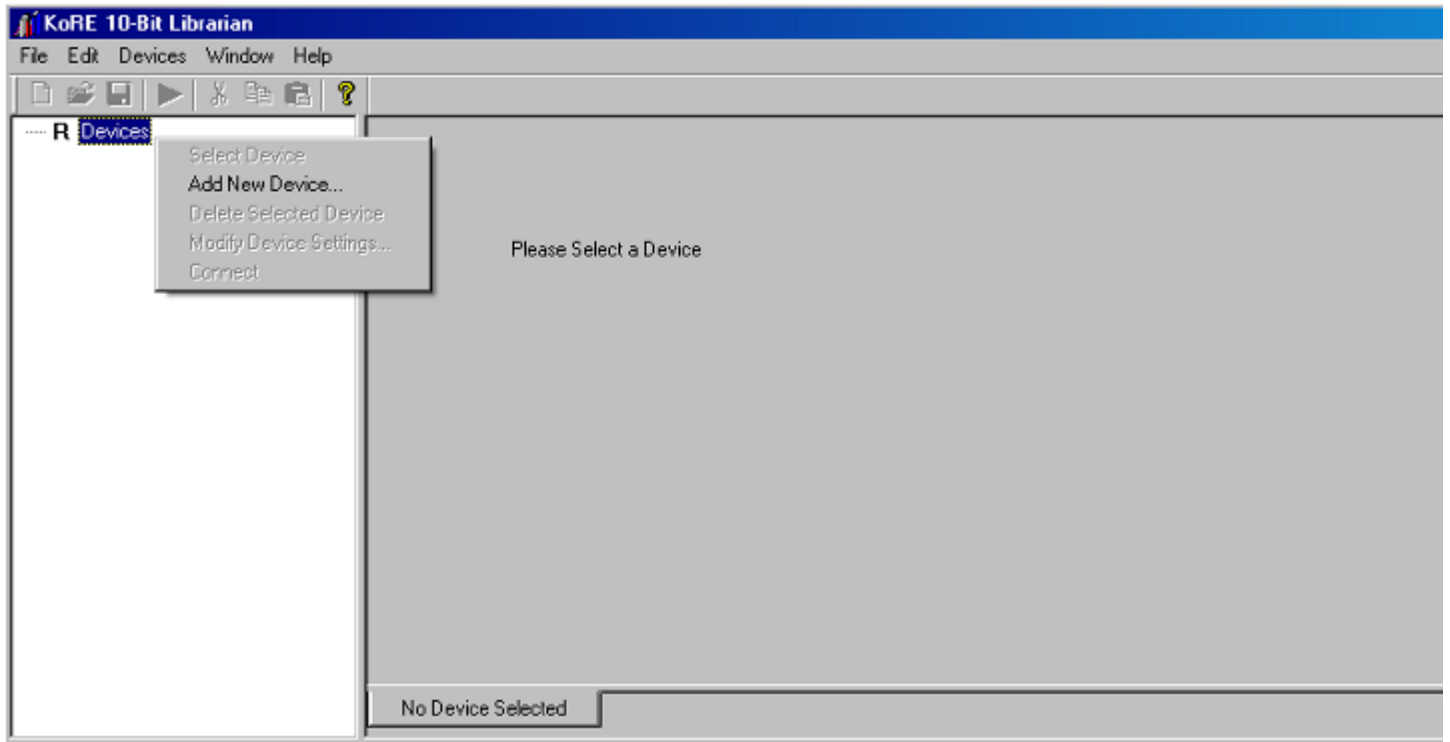
- Ensure that you run a serial cable from the serial port on your Windows XP computer to the RS-232 port on the Christie Roadster projector.
- Apply power to the Roadster Projector. It will require a minimum of 208 VAC.

NOTE: *Do not interrupt power or remove the serial cable during the upload process. This will cause a failure of the upload. In case the upload fails contact Christie Technical support for instructions on how to perform a safe recovery.*

- Turn the projector power switch on. Do not strike the lamp on the projector. Do not use the power button on the remote control. The projector will go through its standard start up procedure and display "— —" on its LED display.



7. Launch the Kore Librarian by double clicking the Kore Librarian Icon on your desktop.

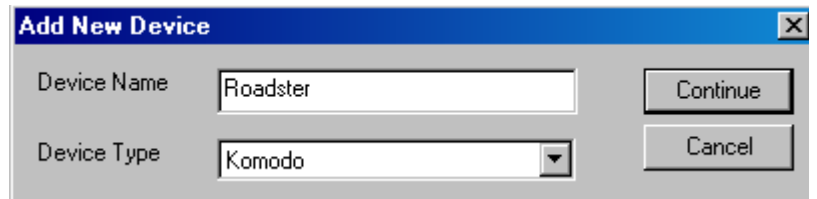


8. Right click on Devices and select "Add new device".

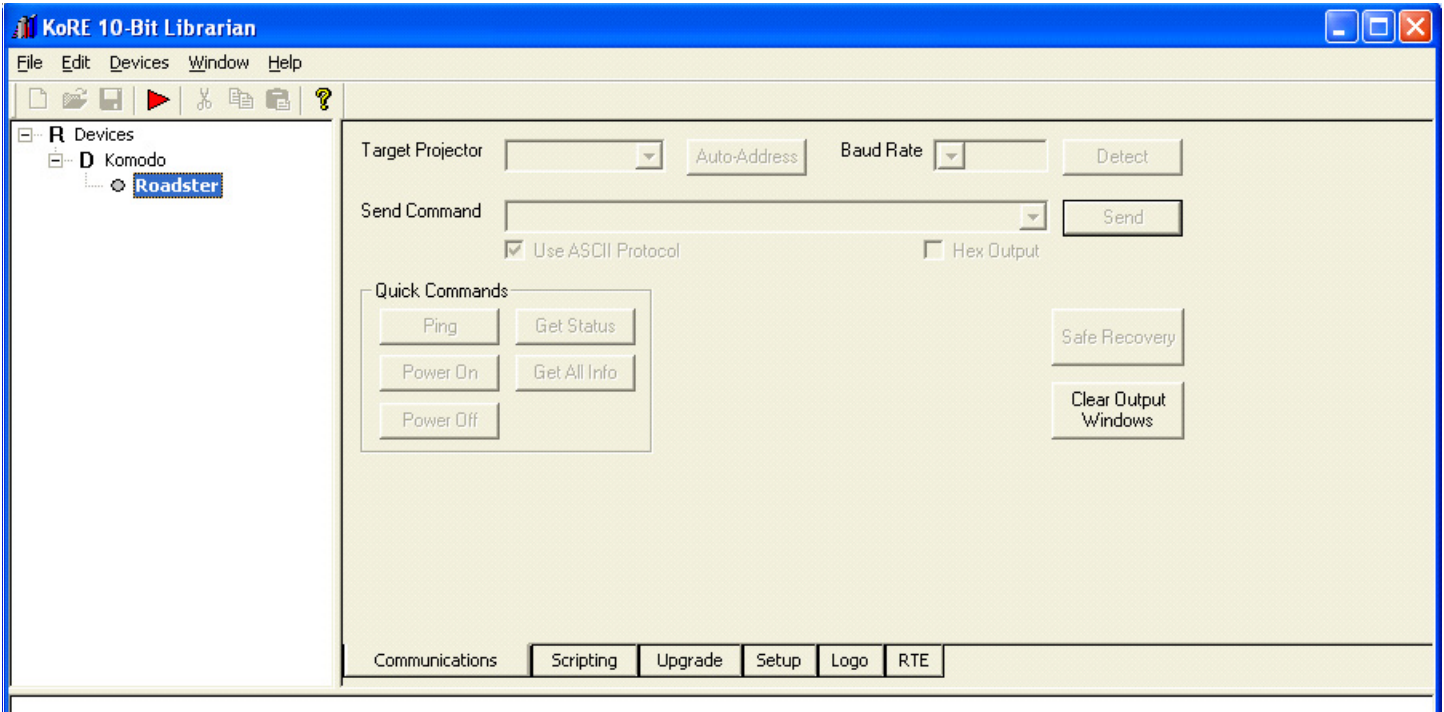
9. Type **Roadster** in the Device Name box, and click the **Continue** button.

This will create a folder under Devices

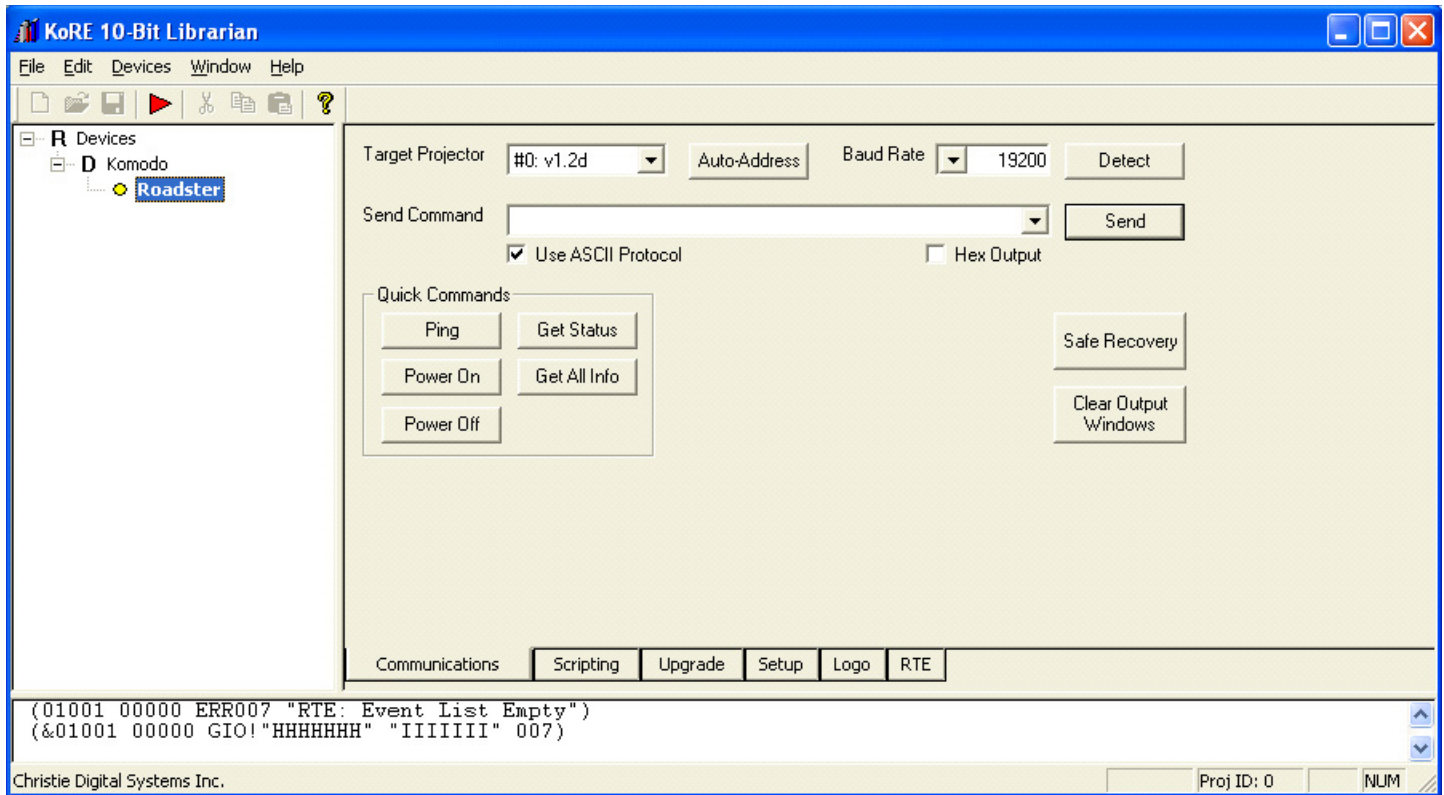
named Komodo containing a Device named Roadster.



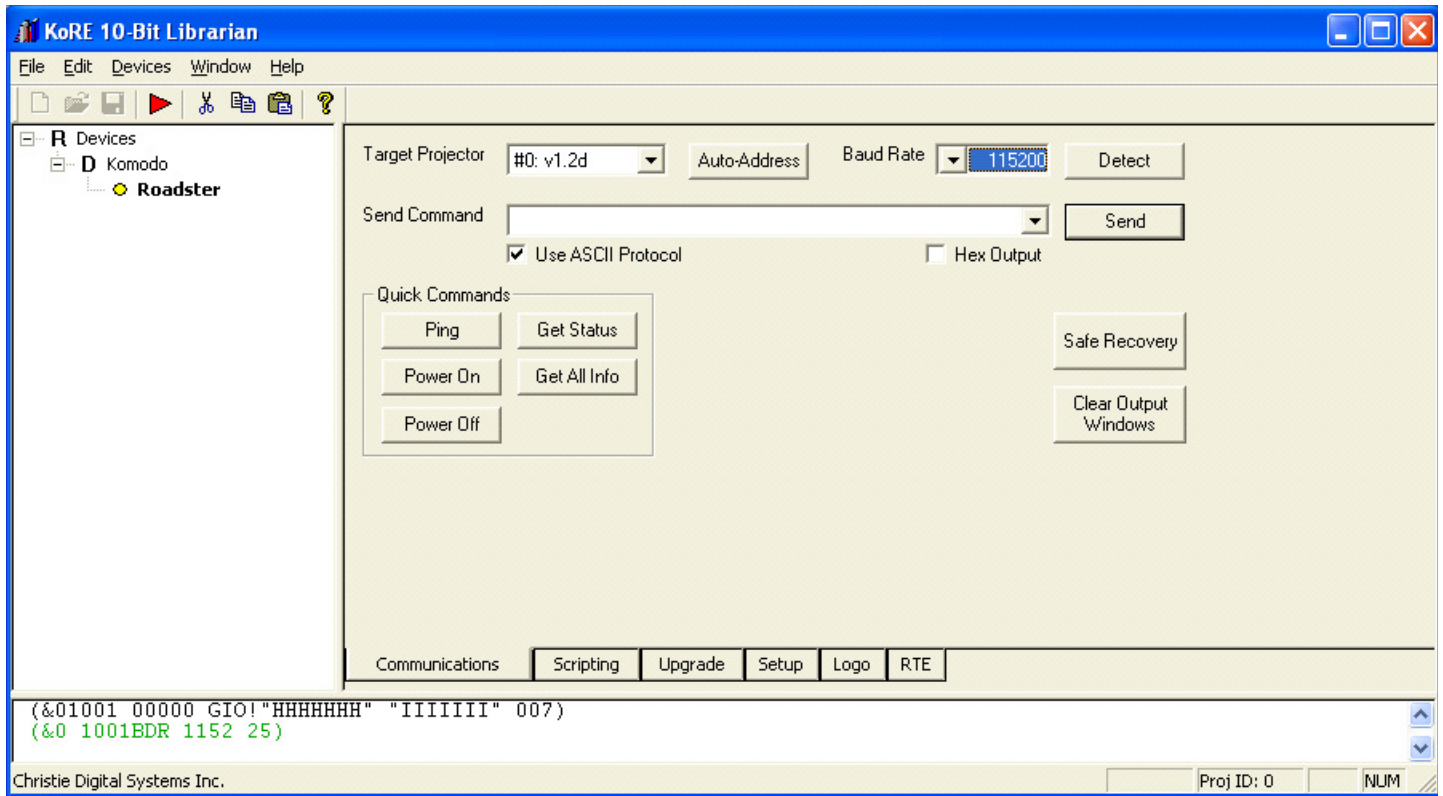
10. Right click on the Roaster device and select "Connect".



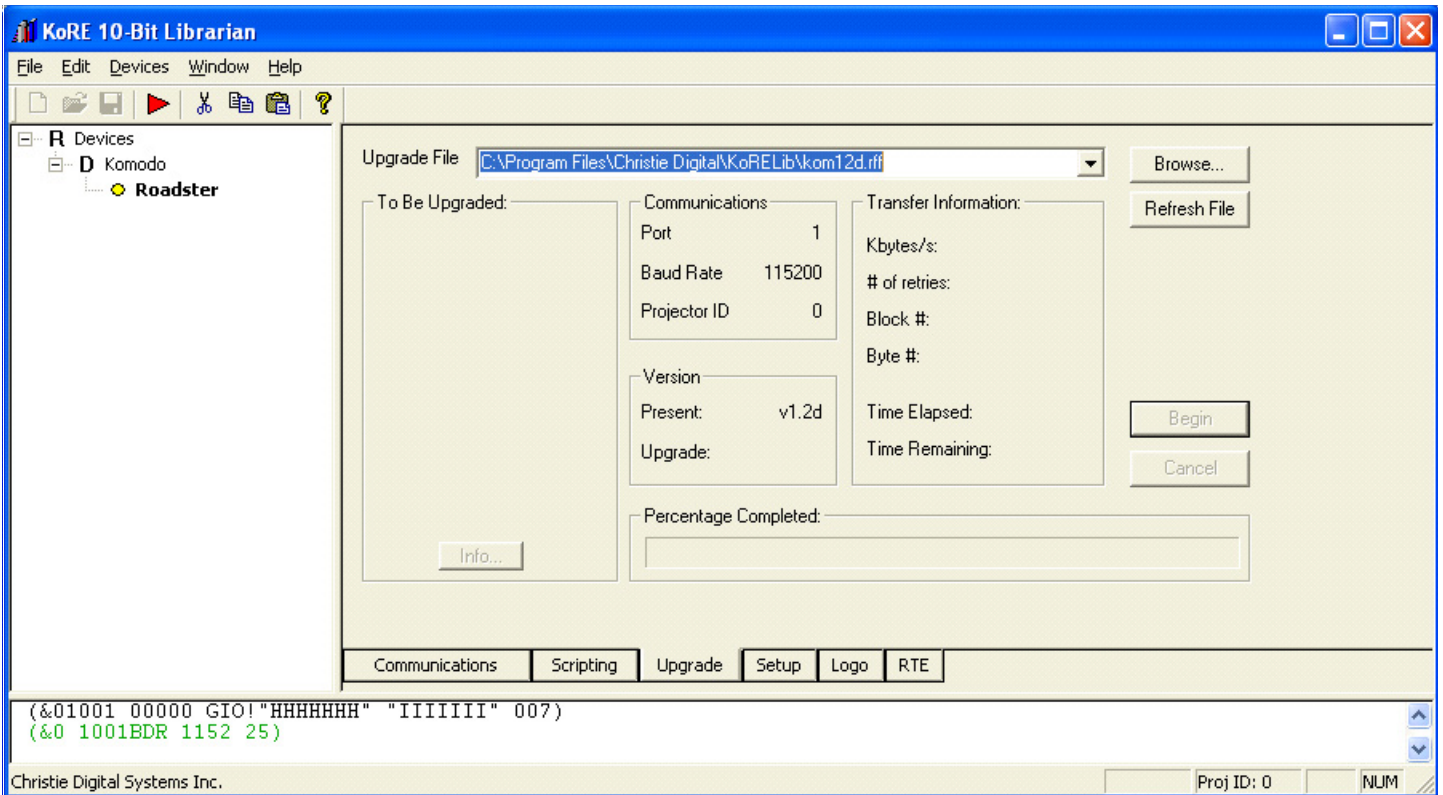
The communications tab will allow command entry and the gray circle next to the Roadster device will turn yellow. This indicates that the projector is communicating with Kore Librarian via the serial cable and serial port on your computer.



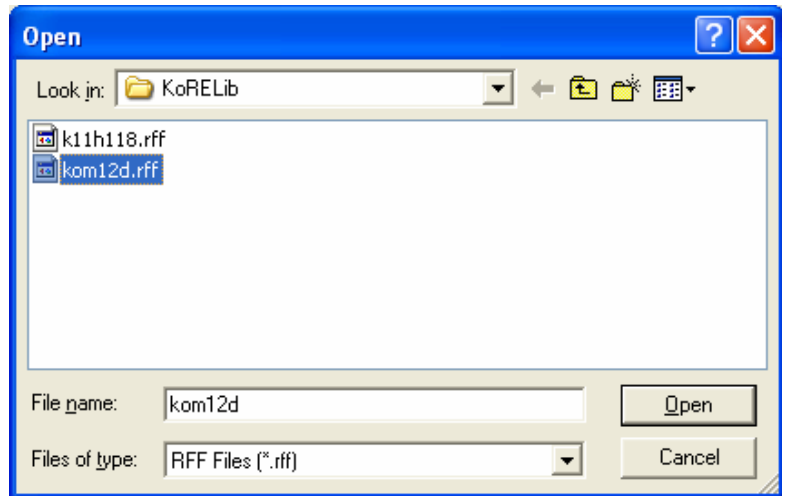
Before uploading new code to the projector change the baud rate to 115200 by clicking on the Baud Rate pull down box and selecting 115200. This will allow for faster uploads. Not changing to the fastest baud rate will result in the software upgrade taking many hours instead of 20 minutes.



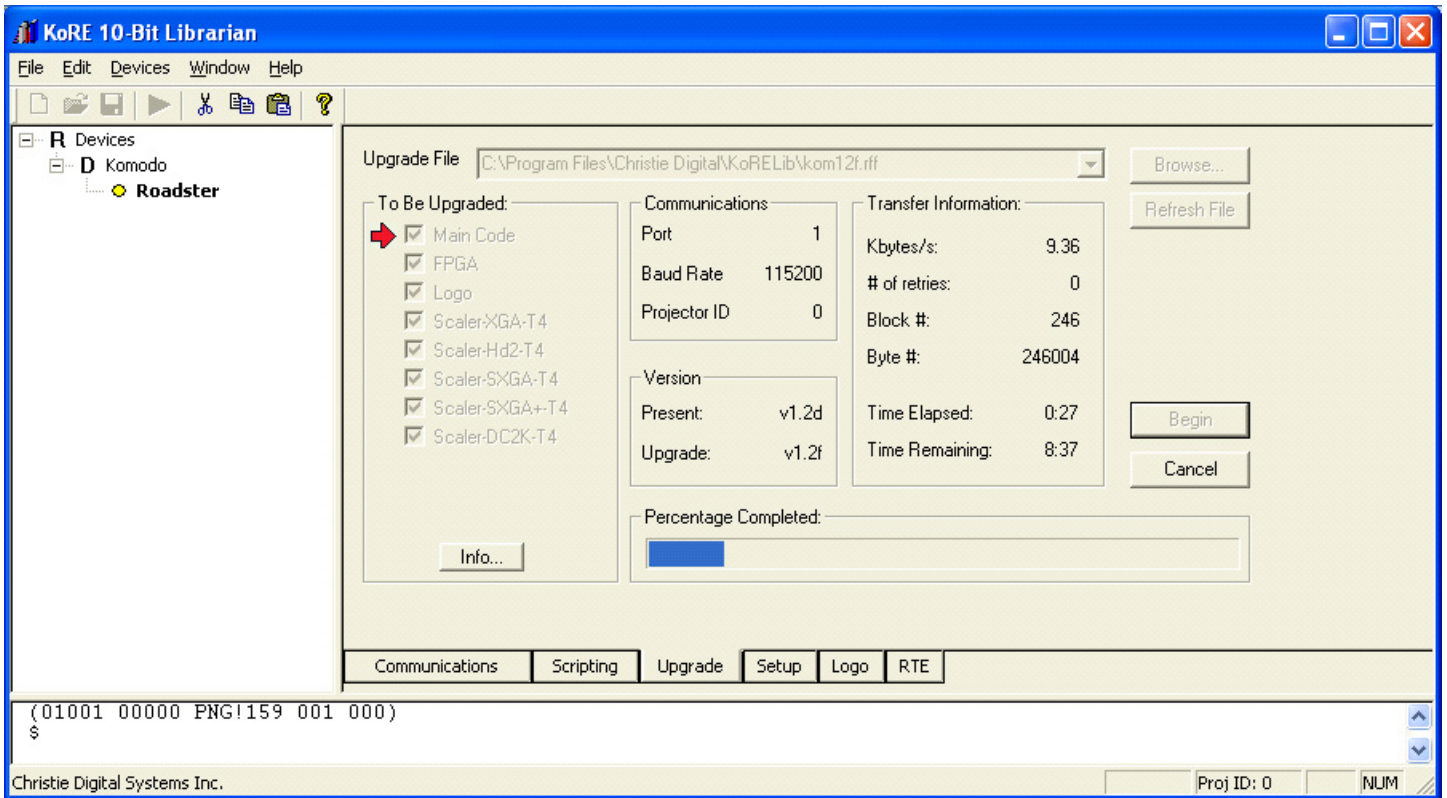
11. Select the Upgrade tab, and click on the Browse button.



12. Navigate to the folder containing the .rff upload file for the Roadster projector and Select **Open**
13. Click on the **Begin** button. The Upload will begin and upload progress will be indicated on the **Percentage Completed** bar.



The upload will proceed through Main Code, FPGA, Logo, and Scaler files. The entire upload process takes approximately 20 minutes.



Upon completion you will see the "Download Complete" window. Click OK.

NOTE: Before connecting the projector back up to the Catalyst Roadster Hub, you must change the projector baud rate back to 19200.

