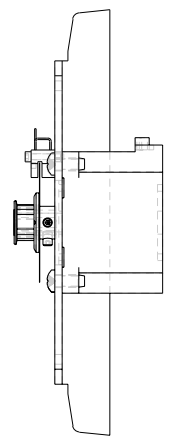
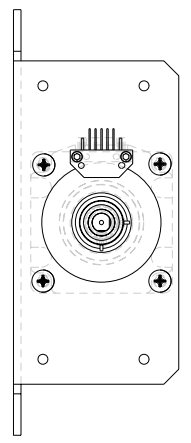
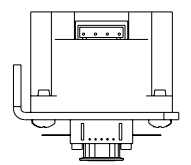
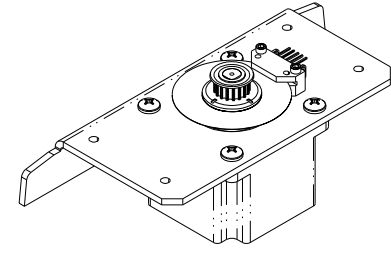
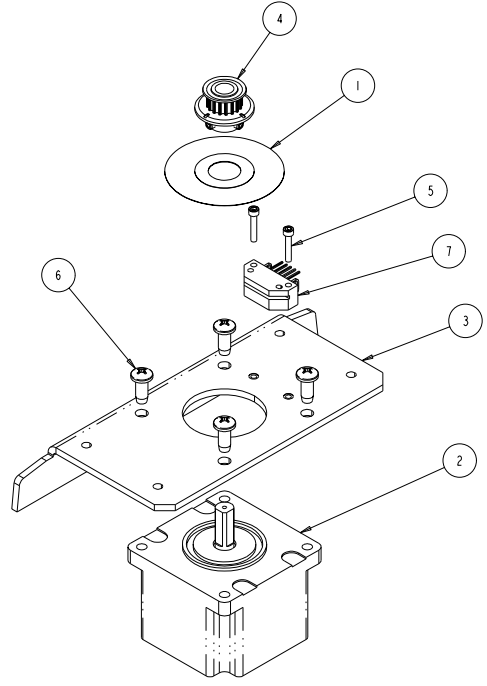
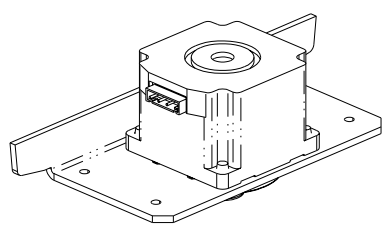


DBA025

REV.	DESCRIPTION	DATE	ENG	ECO #	APPR



ITEM NO.	QTY.	FILENAME	PART NO.	REV	DESCRIPTION
7	1	SENSOR_ENCODER	90306075	-	SENSOR_ENCODER,HEDS-9000U00
6	4	SCREW10-14PPF500	90709062	-	SCREW, PHIL PAN #10 X 1/2 PLASTITE S2
5	2	SCREWM2-5AC14SS	91102514	-	SCREW, M2.5 SOCKET 14 SS
4	1	DB335	99430118	-	PINION, ASSY 17T 3MM HTD
3	1	DB142	99260463	-	MOUNT, TYPE 23 MOTOR DL-2
2	1	MR060	99270035	-	MOTOR, STEP 3PH S60 22.5MM SHAFT JS
1	1	ENCODER_DISK	99180070	-	ENCODER, WHEEL 23.36 RADIUS, 2048 CPR

BILL OF MATERIALS

UNLESS OTHERWISE SPECIFIED:	RELEASE DATE:	CE:	2105 GRACY FARMS LANE AUSTIN, TEXAS 78758 (512) 836-2242 FAX (512) 832-4128 ***** http://www.highend.com	
DIMENSIONAL TOLERANCES:	ENG:	OA:		
0 PLACE DECIMAL = ±0.38	ME:	DRW: LARRY R		
1 PLACE DECIMAL = ±0.25	MEG:			
2 PLACE DECIMALS = ±0.13	ANGLES = ±0.5°	DESCRIPTION:	ASSY, TILT DRIVE, W-ENCODER	
FOR PAINTED PARTS REFER TO ENG. SPEC. MANUAL WI-0592	MATERIAL:	FINISH:	CHARTED NA	
MIN. DRAFT	MIN. RADII	INTERPRET DIMENSIONS PER ASME Y14.5M-1994	PART NO.	DRAWING NO.
THICKNESS	THIRD ANGLE PROJECTION	SI METRIC A1	INTERNAL	DBA025
VOLUME	DIMENSIONS ARE IN MILLIMETERS	DO NOT SCALE	SCALE: 1.000	SHEET: 1 OF 1

PROPRIETARY NOTICE:
 THIS DOCUMENT CONTAINS CONFIDENTIAL AND PROPRIETARY INFORMATION OF HIGH END SYSTEMS INC., (ALSO DBA LIGHTWAVE RESEARCH) AND IS GIVEN TO THE RECEIVER IN CONFIDENCE. THE RECEIVER ACCEPTS AND AGREES THAT, EXCEPT AS AUTHORIZED BY HIGH END SYSTEMS, THE RECEIVER WILL NOT PERMIT THE USE OF THE DOCUMENT OR ANY COPY THEREOF OR THE INFORMATION THEREIN, WILL NOT COPY OR PERMIT COPYING THE DOCUMENT WILL NOT DISCLOSE TO OTHERS EITHER THE DOCUMENT OR THE INFORMATION THEREIN, AND WILL UPON COMPLETION OF THE NEED TO RETAIN THE DOCUMENT, OR UPON DEMAND, RETURN THE DOCUMENT WITHOUT RETAINING ANY OF THE INFORMATION CONTAINED THEREIN IN ANY FORM WHATSOEVER.