

- NOTES: APPLICABLE TO VIEWS ON THIS SHEET ONLY
- 1. SHAFT TO BE FLUSH WITH BACK SIDE OF MOUNT, 2 PLACES
 - 2. SPACER TO BE INSTALLED BETWEEN COUPLER AND MOTOR HOUSING.
 - 3. INSERT WASHER BETWEEN MOTOR AND PLATE, 2 POSITIONS ONLY.

FOR SERVICE REFERENCE ONLY

ITEM NO.	QTY.	FILENAME	PART NO.	DESCRIPTION
24	2	WASHER_265_500_SS	90706020	WASHER, 1/4 FLAT SS .265x .50x .064
23	2	TW372	80071904	STOP, M4, L=16.26 (.64)
22	2	TW374	80071906	STOP, M4, L=31.75(1.25)
21	1	TW373	85000271	STOP, M4, L=25.4
20	1	TW394	85000269	STOP, CYAN #2 SG
19	1	SPACER_5-3_10_5MM_NY	90702216	SPACER, 5.3mm ID x 10.0 x 5.0 LG NYLON
18	2	TW365	99260513	SHAFT, ACHROMAT ZOOM, A1
17	2	SCREWM4AS06CUP-SSP	91190406	SCREW, M4 SOCKET SET, CUP, 06 SS W/PATCH
16	6	SCREWM4AF08BZ	91040408	SCREW, M4 SOCKET CSNK FLAT 08 BZ W/PATCH
15	8	SCREWM3AC06W-BZ	91000306	SCREW, M3 SOCKET CAP 06 BZ SEMS
14	1	TW341	90721013	SCREW, LEAD FRESNEL LENS
13	2	SCREW8-32AS250FLAT-BZ	90707091	SCREW, 8-32 SOCKET SET 1/4 BZ FLAT PT
12	8	SCREW12-24PF500TL-SZ	90711060	SCREW, 12-24 PHIL FLAT 1/2 THRD ROLL, TRI LOBE
11	4	TW378	90702373	SCREW, SHOULDER, M4, MOTOR MOUNT
10	1	TT102	80070524	PLATE, MOUNT, YELLOW/CYAN SG 2.5
9	4	NUTM4KEP	91201204	NUT, M4 KEPS
8	2	TW317	80070448	MOUNT, SHAFT ZOOM SG
7	1	MR108_01	99270075	MOTOR, STEP 2PH MET S17 11.5mm ALNICO NMB
6	4	MR009	99270083	MOTOR, STEPPER NMB 23KM-K286-01V
5	1	TWA808	80530095	GLASS, DIFFUSION W/4 PADS, SG
4	2	TWA088	80560044	FLAG ASSY, YELLOW
3	2	TWA087	80560042	FLAG ASSY, CYAN
2	4	TWA083	80140039	DAMPER ASSY, MTR BRAKE, HI-TEMP, .25 DIA
1	1	SPI91	90701149	COUPLER, SLIM-LINE .88 VIBRATION CONTROL

UNLESS OTHERWISE SPECIFIED: RELEASE DATE: CE: High End 2105 GRACY FARMS LANE AUSTIN, TEXAS 78758 (512) 836-2242 FAX (512) 832-4128 http://www.highend.com

DIMENSIONAL TOLERANCES: ENG: ME: MEG: DRW: DESCRIPTION: MODULE, ASSY, COLOR, YELLOW/CYAN, SG SVC

FOR PAINTED PARTS REFER TO ENG. SPEC. MANUAL WI-0592 MATERIAL: CHARTED FINISH: N/A

ALL COMPONENTS, MATERIALS AND FINISHES TO BE RHS COMPLIANT

MIN. DRAFT MIN. RADI1 FLATNESS THICKNESS VOLUME

INTERPRET DIMENSIONS PER ASME Y14.5M-1994 THIRD ANGLE PROJECTION DIMENSIONS ARE IN MILLIMETERS

SI METRIC A1 PART NO. NA DRAWING NO. TTA076_SVC REV. NA

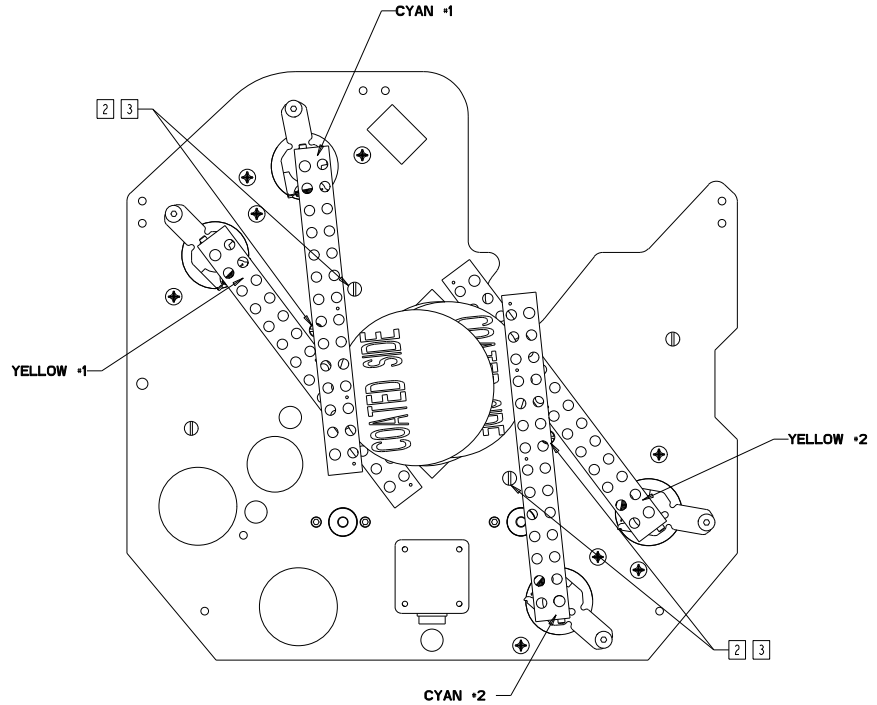
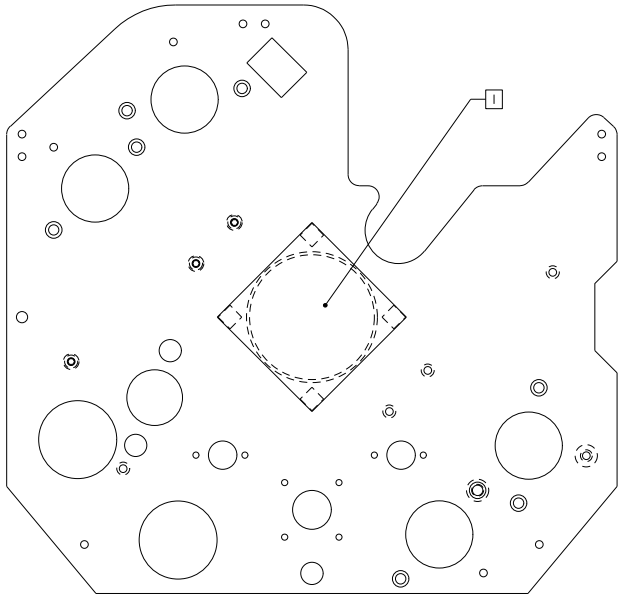
DO NOT SCALE SCALE: 1.000 SHEET: 1 OF 2

PROPRIETARY NOTICE:
 THIS DOCUMENT CONTAINS CONFIDENTIAL AND PROPRIETARY INFORMATION OF HIGH END SYSTEMS INC., (ALSO DBA LIGHTWAVE RESEARCH) AND IS GIVEN TO THE RECEIVER IN CONFIDENCE. THE RECEIVER ACCEPTS AND AGREES THAT, EXCEPT AS AUTHORIZED BY HIGH END SYSTEMS, THE RECEIVER WILL NOT PERMIT THE USE OF THE DOCUMENT OR ANY COPY THEREOF OR THE INFORMATION THEREIN, WILL NOT COPY OR PERMIT COPYING THE DOCUMENT OR THE INFORMATION THEREIN, AND WILL UPON COMPLETION OF THE NEED TO RETURN THE DOCUMENT, OR UPON DEMAND, RETURN THE DOCUMENT WITHOUT RETAINING ANY OF THE INFORMATION CONTAINED THEREIN IN ANY FORM WHATSOEVER.

NOTES: APPLICABLE TO VIEWS THIS PAGE ONLY

1. REMOVE PROTECTIVE LINER FROM THE 4 ADHESIVE PADS TO BOND THE DIFFUSION GLASS TO MOUNT PLATE. CENTER OVER APERTURE.
2. ENERGIZED MOTORS ARE REQUIRED TO PRODUCTION HOME FLAG ASSEMBLIES AGAINST THE CLOSED STOP.
3. ALIGN TOP EDGE OF FLAG ASSEMBLY TO BOTTOM GROOVE EDGE OF STOP FOR EACH FLAG.

**FOR SERVICE
REFERENCE ONLY**



UNLESS OTHERWISE SPECIFIED		RELEASE DATE:	CE:	High End	2105 GRACY FARMS LANE AUSTIN, TEXAS 78758	
DIMENSIONAL TOLERANCES:		ENG:	OA:		(512) 836-2242	
0 PLACE DECIMAL = ±0.38		ME:	DRW:	FAK (512) 832-4128 http://www.highend.com		
1 PLACE DECIMAL = ±0.25		DESCRIPTION:				
2 PLACE DECIMALS = ±0.13		MODULE, ASSY, COLOR, YELLOW/CYAN, SG SVC				
ANGLES = ±0.5°		MATERIAL:				
FOR PAINTED PARTS REFER TO		FINISH:				
ENG. SPEC. MANUAL WI-0592		CHARTED				
ALL COMPONENTS, MATERIALS AND		N/A				
FINISHES TO BE R6HS COMPLIANT		INTERPRET DIMENSIONS PER ASME Y14.5M-1994 THIRD ANGLE PROJECTION DIMENSIONS ARE IN MILLIMETERS				
MIN. DRAFT		SI METRIC	PART NO.	DRAWING NO.		REV.
MIN. RADI		A1	NA	TTA076_SVC		NA
FLATNESS			DO NOT SCALE	SCALE: 0.750	SHEET: 2 OF 2	
THICKNESS						
VOLUME						

PROPRIETARY NOTICE:
 THIS DOCUMENT CONTAINS CONFIDENTIAL AND PROPRIETARY INFORMATION OF HIGH END SYSTEMS INC., (ALSO DBA LIGHTWAVE RESEARCH) AND IS GIVEN TO THE RECEIVER IN CONFIDENCE. THE RECEIVER ACCEPTS AND AGREES THAT, EXCEPT AS AUTHORIZED BY HIGH END SYSTEMS, THE RECEIVER WILL NOT PERMIT THE USE OF THE DOCUMENT OR ANY COPY THEREOF OR THE INFORMATION THEREIN, WILL NOT COPY OR PERMIT COPYING THE DOCUMENT WILL NOT DISCLOSE TO OTHERS EITHER THE DOCUMENT OR THE INFORMATION THEREIN, AND WILL UPON COMPLETION OF THE NEED TO RETAIN THE DOCUMENT, OR UPON DEMAND, RETURN THE DOCUMENT WITHOUT RETAINING ANY OF THE INFORMATION CONTAINED THEREIN IN ANY FORM WHATSOEVER.