



Hog 4 OS Release Notes

v3.12.0 b2351 | April 23, 2019

Hog 4-18, Hog 4, Full Boar 4, Road Hog 4, Nano Hog 4, Hog 4PC, HedgeHog 4/4S/4N/4X, RackHog 4

Installation Instructions

All Consoles require a full install of v3.12.0.

A third party application called "Etcher" is required for creating v3.12.0 full install USB flash drives. Do not use LinuxLive.

Hog 4 PC v3.12.0 will only install and run on Windows 10.

Hog 4 PC is no longer supported on Windows Vista, Windows 7, Windows 8, or Windows 8.1

It may take ~1 minute following the installation of Hog 4 PC for an ETCnomad Key to be recognized.

Show File Compatibility

Show files created/edited with Hog 4 OS v3.12.0 are compatible with Hog 4 OS v3.9.0 and greater.

All pre-existing Hog 4 show files are compatible with Hog 4 OS v3.12.0.

Fixture Library Compatibility

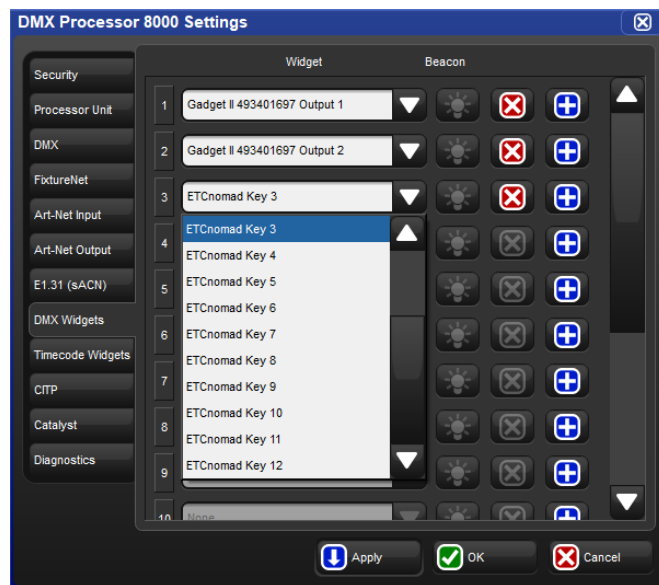
Hog 4 OS v3.12.0 comes with Fixture Library v4.19.126 installed.

All pre-existing v4 fixture libraries and show files are compatible with Hog 4 OS v3.12.0.

New Features and Enhancements:

Gadget II and ETCnomad Key Support

ETC's Gadget II and ETCnomad Key are now supported by Hog 4 OS. An ETCnomad Key must be connected to the same machine as the Gadget II in order to enable its DMX outputs. The ETCnomad Key can also be used with Hog 4 PC to unlock Art-Net & sACN output for universes to which it is mapped. For details please refer to section 3.8 of the Hog 4 OS v3.12.0 help manual.



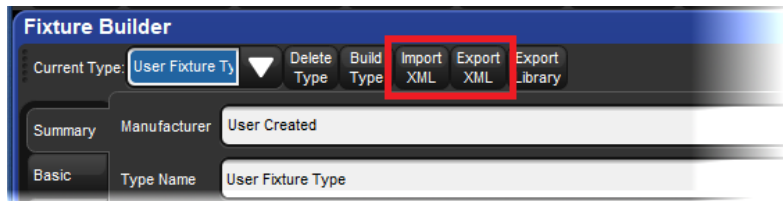
CITP Visualizer Stream Support for Capture 2019



CITP visualizer streaming enables Hog 4 Consoles and Hog 4 PC to control Capture 2019 without the need to install the Hog Connectivity driver and works with both the Macintosh and Windows versions of Capture as well as with Capture presentation files. Capture version 2019.0.13 or greater is required. For details see section 28.4.5 of the v3.12.0 help manual.

Fixture Builder: XML Import & Export

Fixture types can now be imported and exported from fixture builder as XML formatted documents which can be edited offline. Fixture types copied from the full library are encrypted and can only be read by Hog 4 software. For details see sections 27.4.8 and 27.4.9 of the Hog 4 OS v3.12.0 help manual.

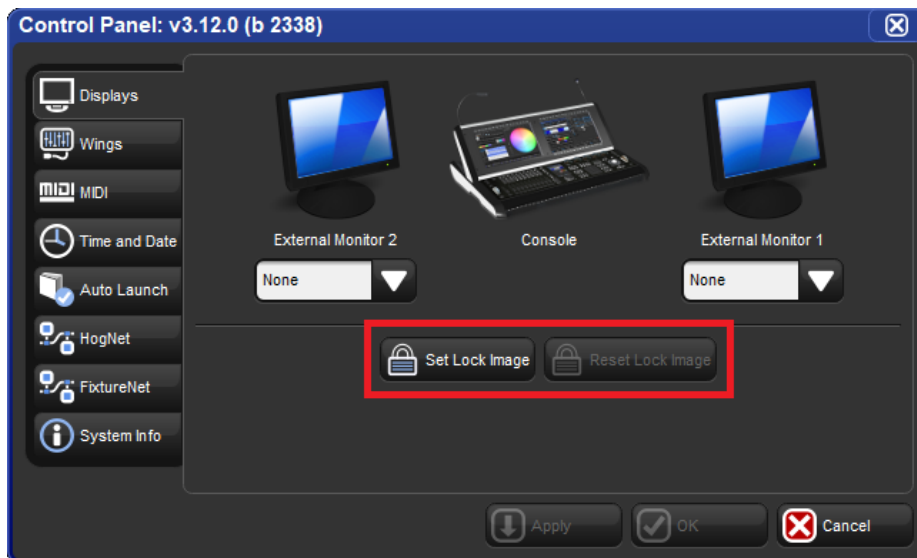


Custom Lock Screen Image with Auto-Hide Onscreen Pin Keypad

A custom image can be specified for the lock screen by clicking on the “Set Lock Image” button located under the Displays tab of the Control panel. The onscreen keypad auto-hides when the console is locked with a custom image. Press the pig key to un-hide the onscreen keypad. Lock screen images are stored per console and persist for all show files loaded on the console. Lock screen images are NOT stored per show. For more information refer to section 3.1.10 of the Hog 4 OS v3.12.0 Help Manual.

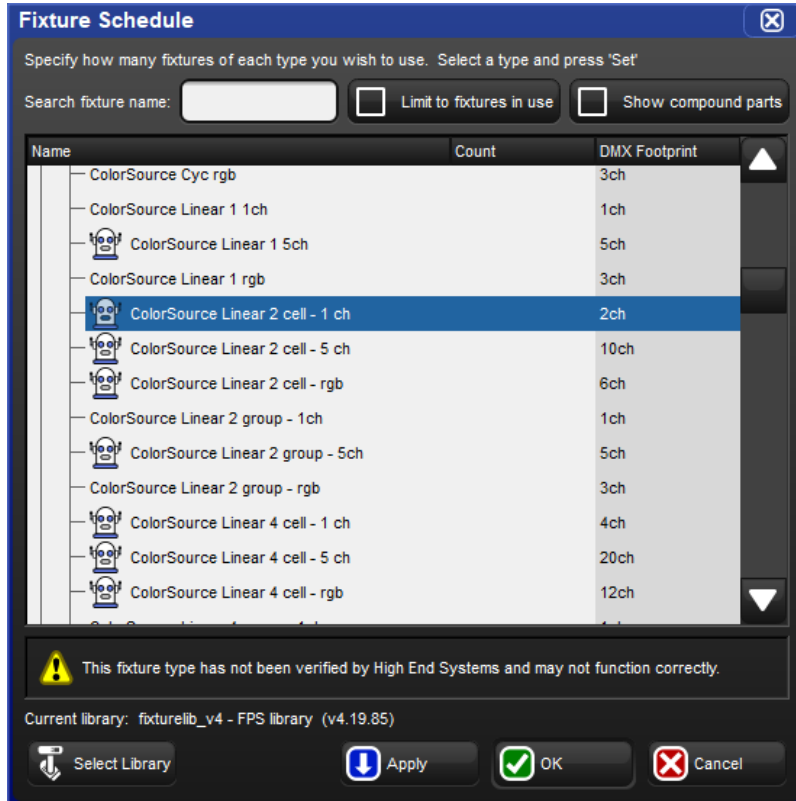
The following image resolutions are recommended for each console:

Hog 4-18	1920 x 1080
Hog 4	1280 x 768
Full Boar 4	1366 x 768
Full Boar 4 2016	1920 x 1080
Road Hog 4	1680 x 1050
HegeHog 4	1280 x 800



Unverified Fixture Types

Hog 4 OS v3.12.0 is the first release to support fixture libraries containing unverified fixture types that have not been fully tested by High End Systems. Unverified fixture types are presented in the fixture scheduler with a special robot icon and warning. High End Systems recommends testing unverified fixture types with real fixtures before programming them into a show. Most edits or corrections that need to be made to a fixture type can be accomplished using fixture builder.



Rev 2 Board Support for HedgeHog 4, MiniWing 4, and Hoglet 4 Front Panels

Hog 4 OS v3.12.0 adds support for HedgeHog 4, MiniWing 4, and Hoglet 4 revision 2 front panel boards. The revision 2 boards only contain minor board component changes needed for part sustainability.

Bug Fixes:

D-02912	Next / Back can select the wrong units when total selection doesn't exist
D-03051	Frame 1B, 2B, 3B, and 4B missing from effect editor
D-03951	Auto-Color for directory cells not updated when dominant color in palette is changed
D-04030	Center Choose is not recorded properly into keystroke macros
D-04049	Held directory items shouldn't token on the command line if properties are adjusted
D-04050	Held directory items shouldn't execute if properties are adjusted
D-04051	Cannot adjust a directory item's properties if the command line is dirty
D-04060	First Master on Playback Bars 1<8 act as the Grand Master when GM key is held
D-04082	Fixture Builder: DMX 0<255 w/ real world 0<255 doesn't allow 1:1 programming
D-04084	Opening empty keystroke macro on command key crashes desktop
D-04096	Main (center) playback keys do not play back in keystroke macros

D-04123	Launcher takes 10 seconds to appear after changing console date/time
D-04150	Fatal Error creating New Fixture Type if fixture schedule's library set to "none"
D-04156	Fixture Builder: Changes to Default values not saved properly (floating point)
D-04178	DP8000 crash importing patch that contains Axon Layer
D-04192	Copy Type does not work when copying a user-created fixture
D-04230	ArtNet Unicasting to machines not physically on the network causes output delays
D-04247	Fixture Builder fails to build fixture due to Unescapable Combo
D-04254	Gobo mutexing not working when coping fixtures into the fixture builder
D-04283	Vent light and work light check not in test app
D-04284	Copy Type Inserts wrong default DMX values for some functions
D-04292	Desktop Crash recording view that contains virtual wing window
D-04312	Desktop Crash merging certain older show files
D-04319	Hippotizer v4.4 Layer function labels are not showing properly