

REVISION HISTORY

SCH REV	PCB REV	ECO NO.	DATE	COMMENT
1.4	1.4	-		INITAIL

NOTES :

UNLESS OTHERWISE SPECIFIED :

1. ALL RESISTOR VALUES ARE IN OHMS
2. ALL RESISTORS ARE 1/4 WATT 5% OR BETTER
3. CAPACITORS VALUES ARE IN PICO FARADS
4. ALL NON POLARIZED CAPACITORS ARE 50V OR BETTER
VALUES BELOW 470pF ARE NPO/COG TYPE 5%
VALUES 470pF TO 1000pF ARE X7R 10%
VALUES ABOVE 1000pF ARE Z5U +/- 20 %
5. ALL POLARIZED CAPACITORS ARE 20% OR BETTER
6. ALL DIODES ARE 1N4148

EMULATOR LOGIC BOARD

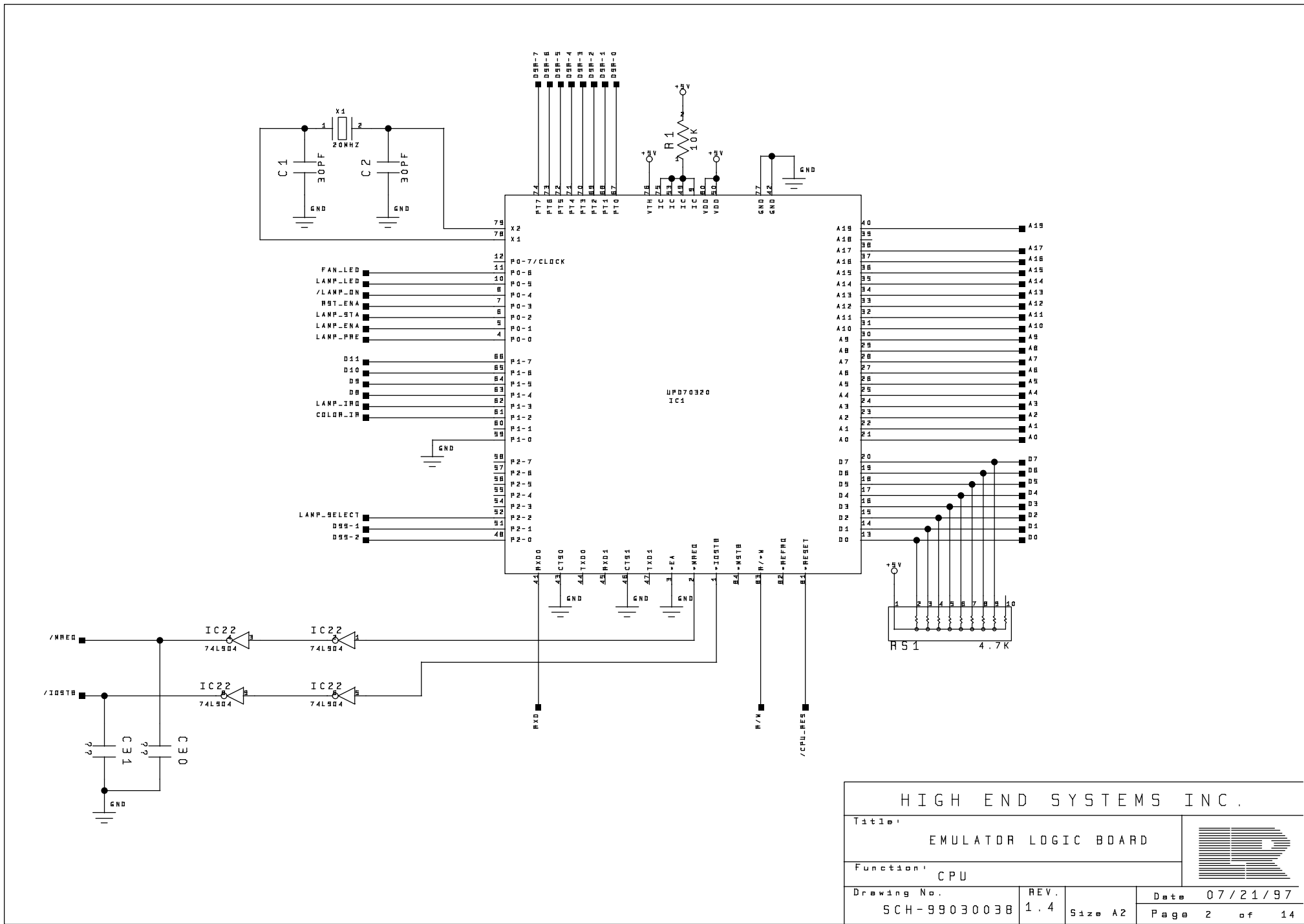
PROPRIETY NOTICE

This document contains confidential and proprietary information of High End Systems, Inc., (also dba Lightwave Research) and is given to the receiver in confidence. The receiver accepts and agrees that, except as authorized by High End Systems, the receiver will not use or permit the use of the document or any copy thereof or the information therein, will not copy or permit copying the document, will not disclose to others either the document or the information therein, and will upon completion of the need to retain the document, or upon demand, return the document without retaining any of the information therein in any form whatsoever.

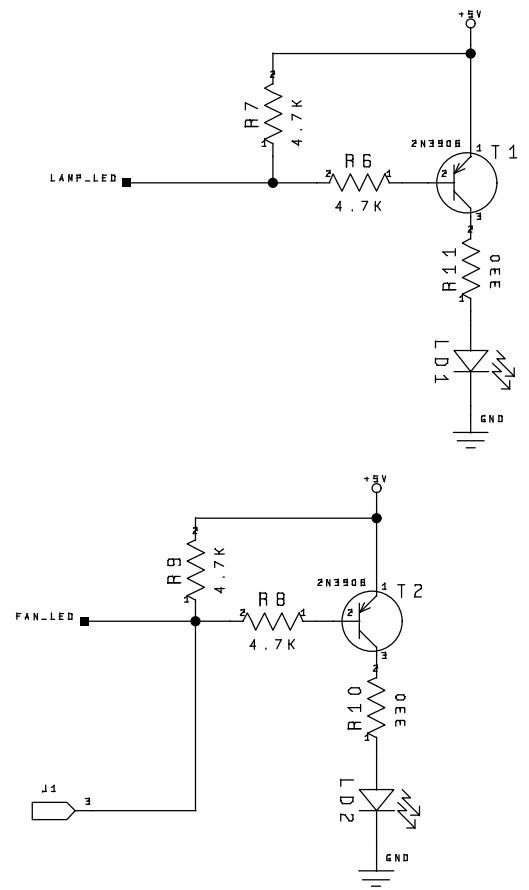
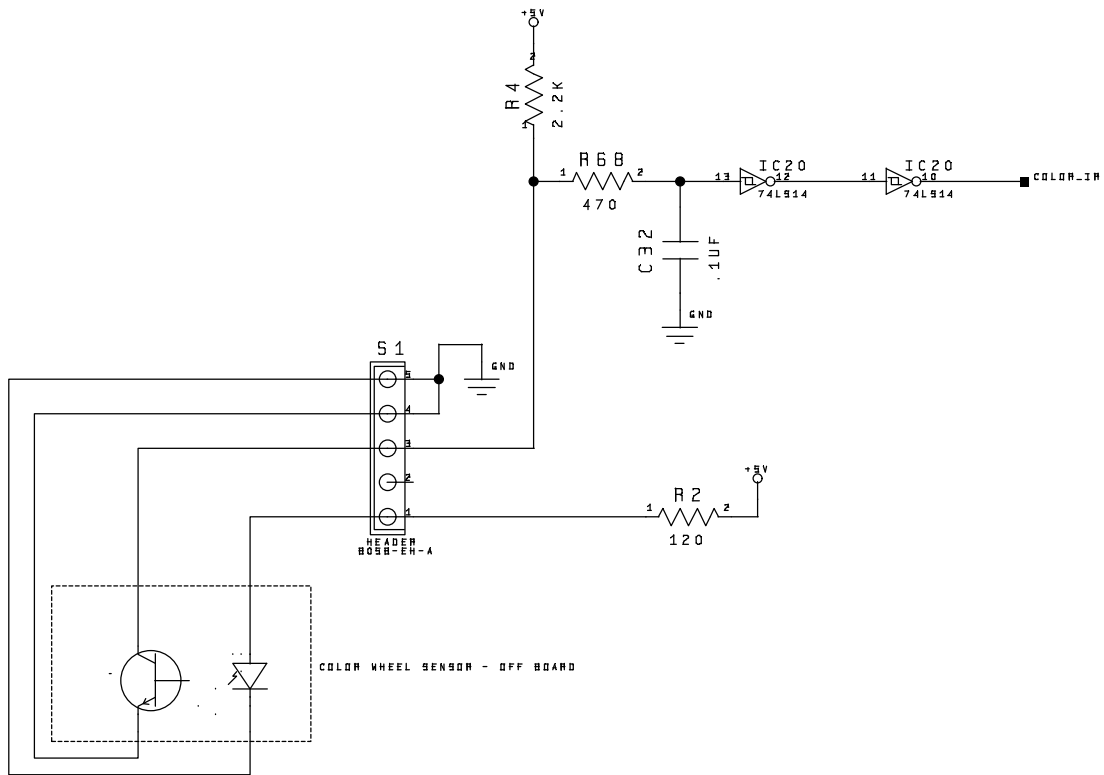
Copyright © 1994 High end systems, Inc.

HIGH END SYSTEMS INC.			
Title:		EMULATOR LOGIC BOARD	
Function:		COVER SHEET	
Drawing No.	REV.	Designed:	
SCH-99030038	1.4	DESIGNER	
Drawn:		Approved:	
DRAWER			
Date	Size	Page	
07/21/97	A2	1	of 14

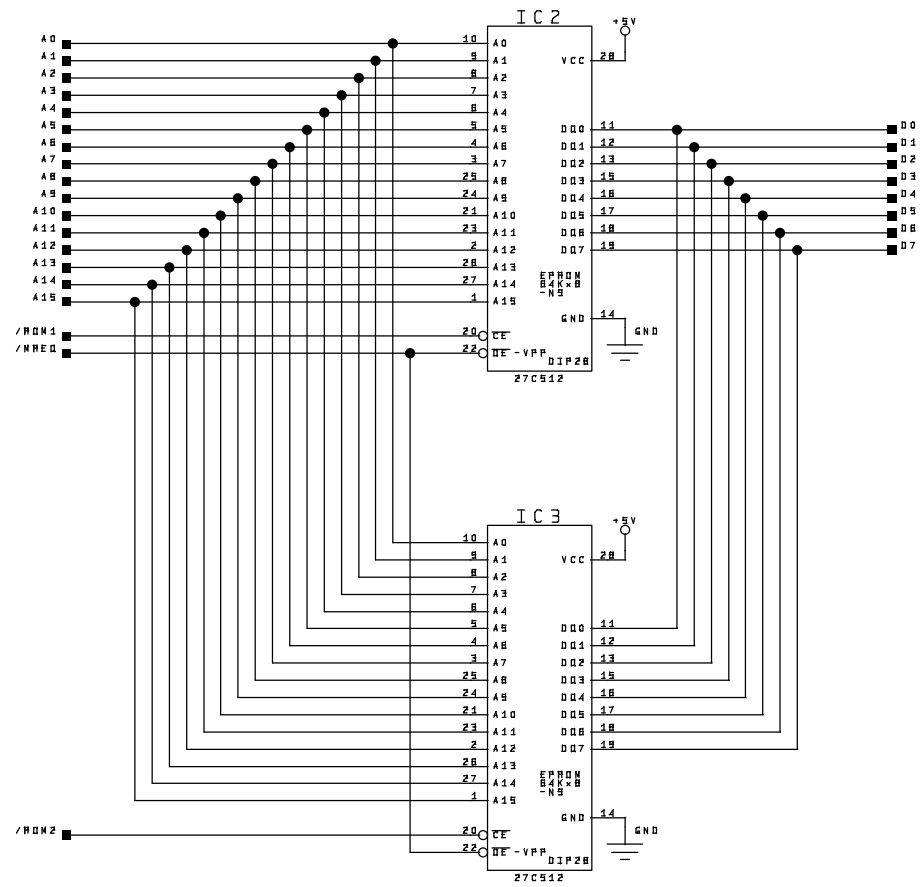




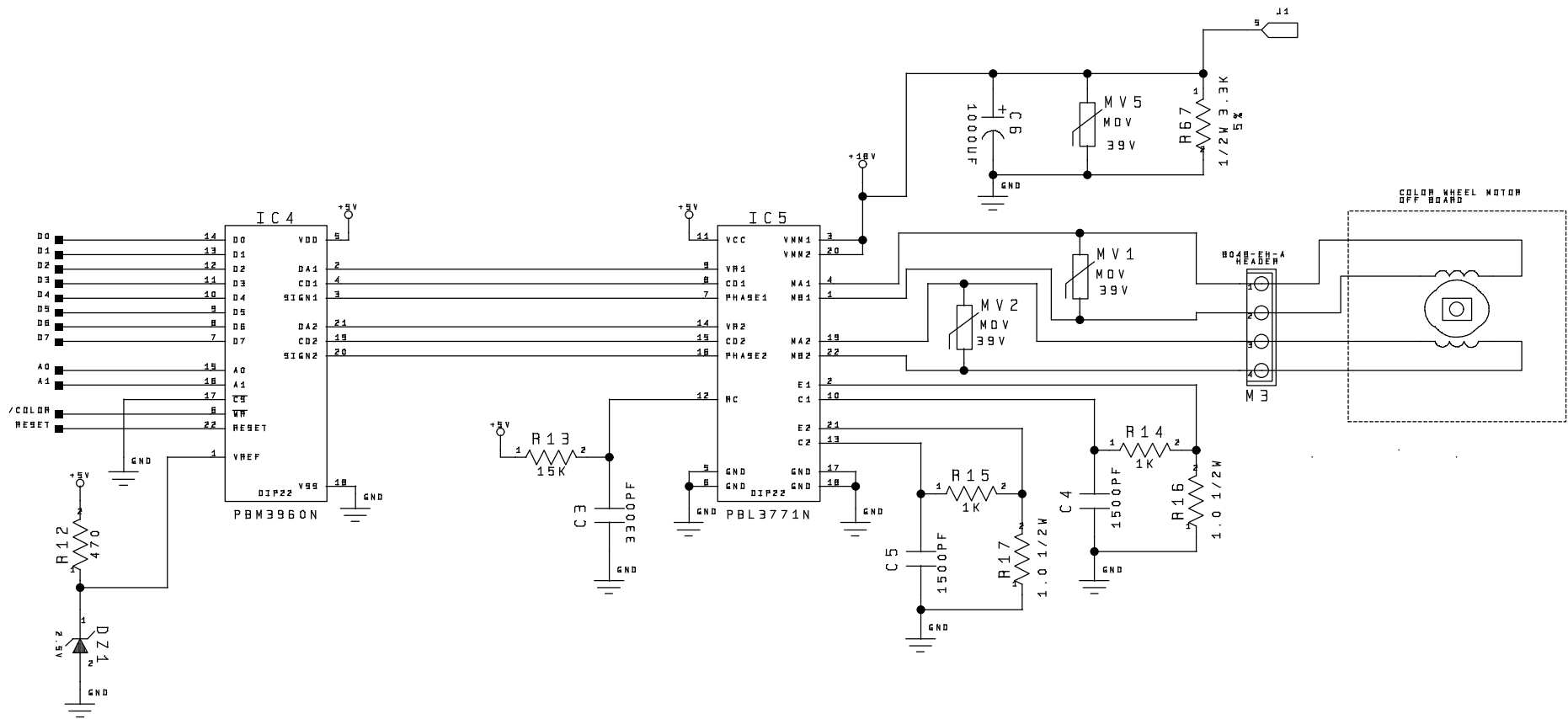
HIGH END SYSTEMS INC.			
Title:		EMULATOR LOGIC BOARD	
Function:		CPU	
Drawing No.	REV.	Size	Date
SCH-9903003B	1.4	A2	07/21/97
			Page 2 of 14



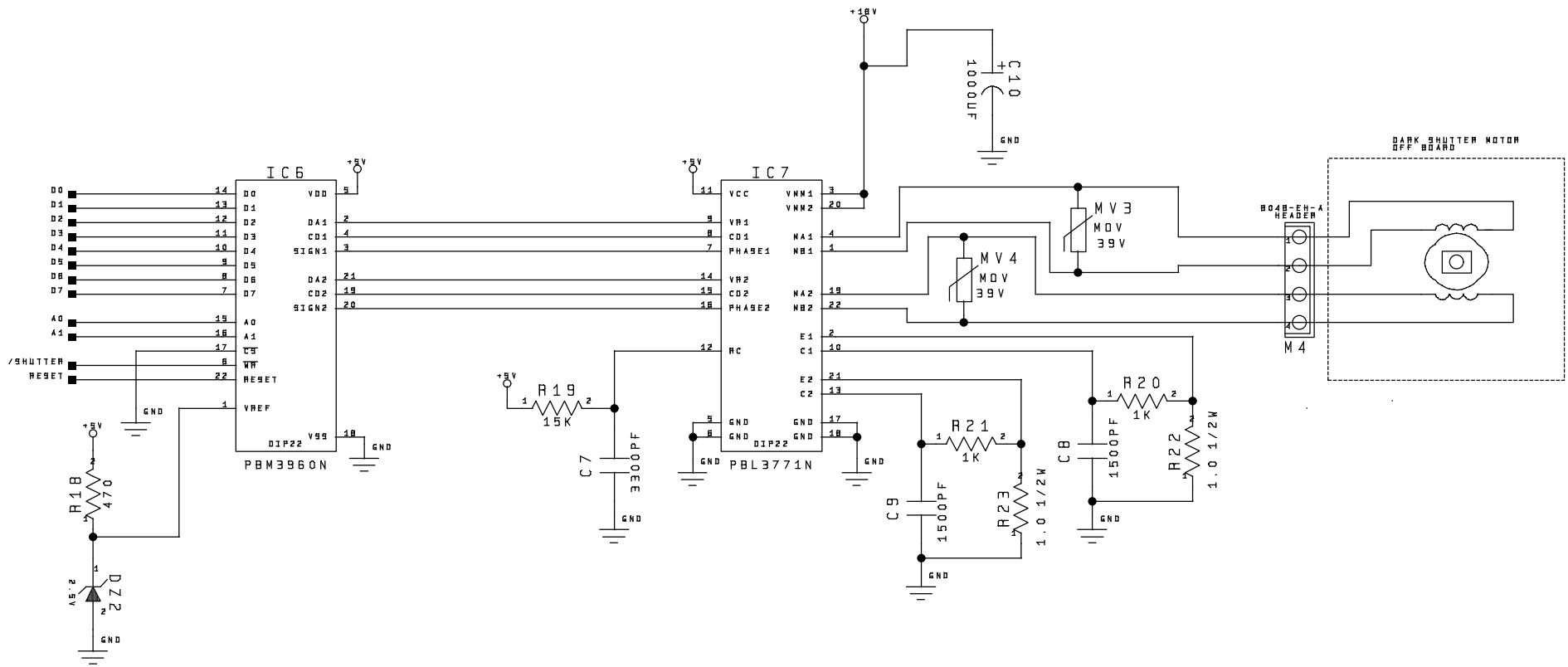
HIGH END SYSTEMS INC.			
Title:		EMULATOR LOGIC BOARD	
Function:		FUNCTION	
Drawing No.	REV.	Date	07/21/97
SCH-9903003B	1.4	Size A2	Page 3 of 14



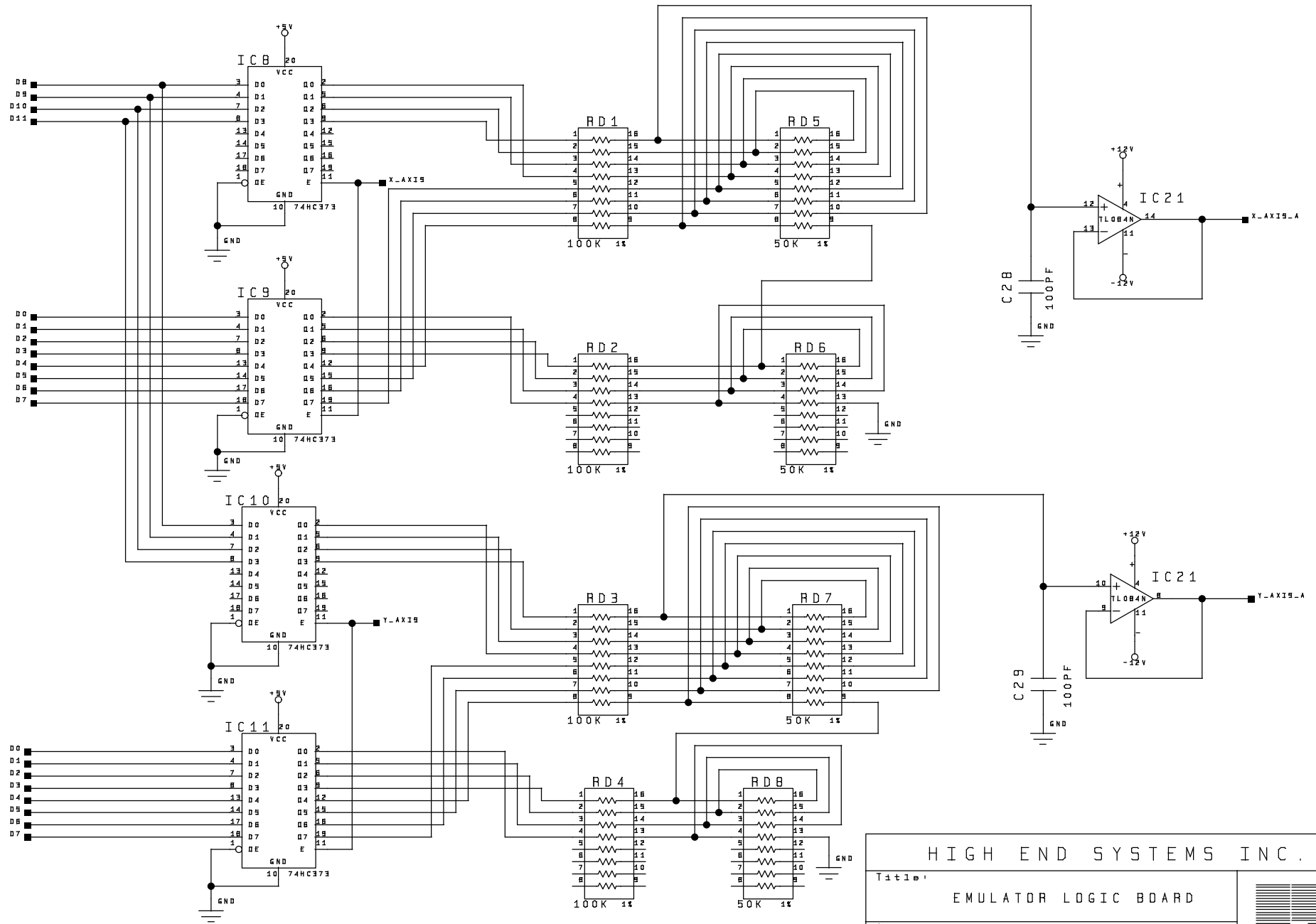
HIGH END SYSTEMS INC.			
Title:		EMULATOR LOGIC BOARD	
Function:		EPROM	
Drawing No.	REV.	Size	Date
SCH-9903003B	1.4	A2	07/21/97
			Page 4 of 14



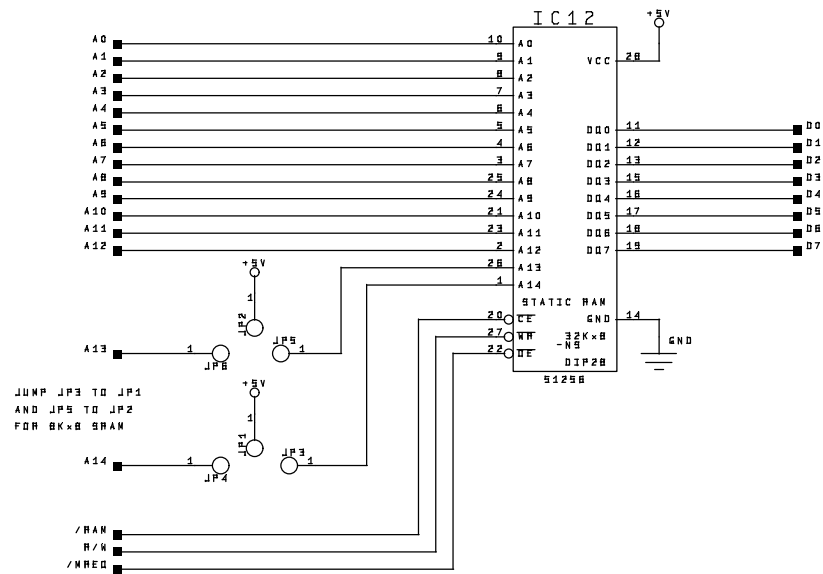
HIGH END SYSTEMS INC.			
Title:		EMULATOR LOGIC BOARD	
Function:		COLOR MOTOR CONTROL	
Drawing No.	REV.	Size	Date
SCH-9903003B	1.4	A2	07/21/97
			Page 5 of 14



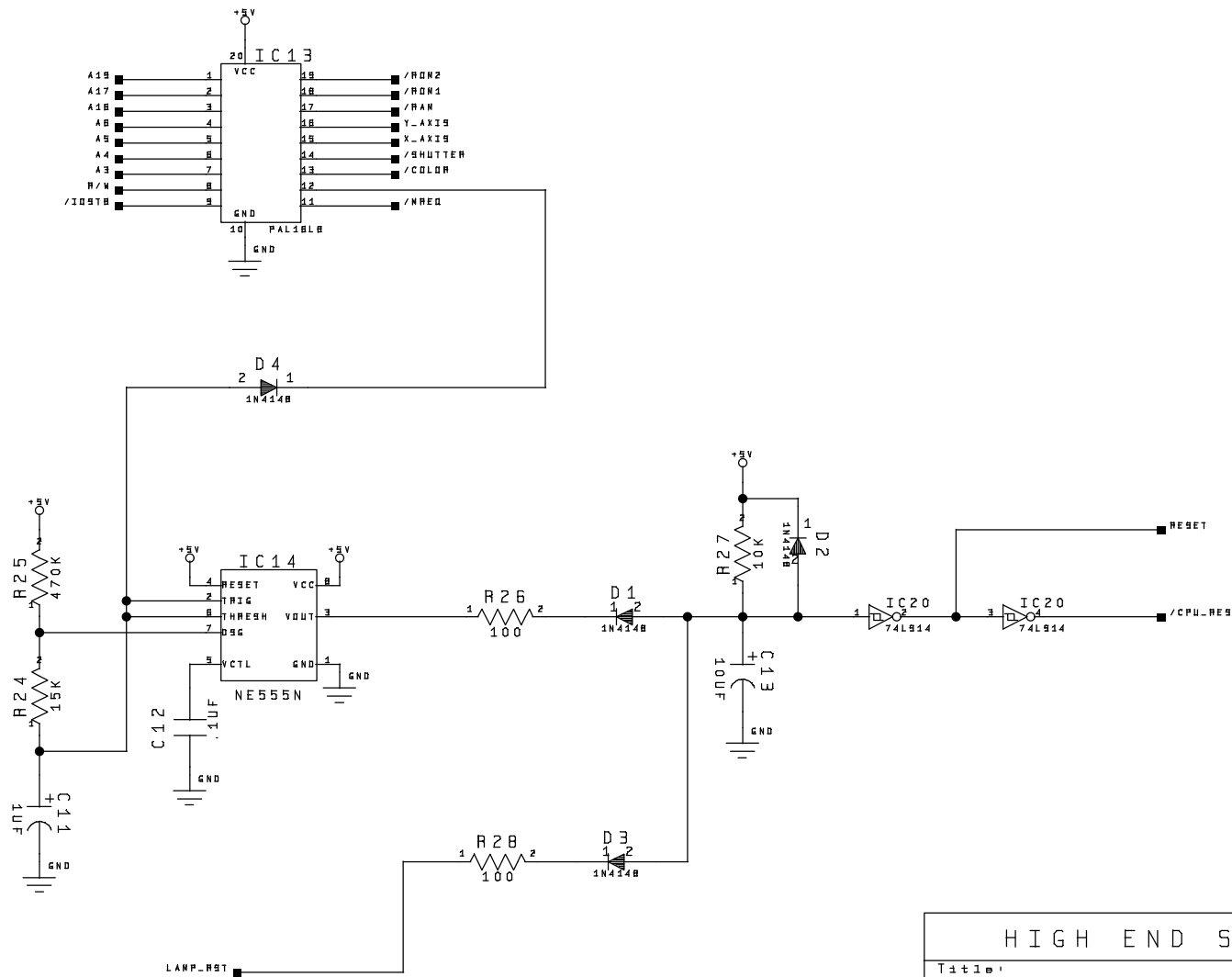
HIGH END SYSTEMS INC.			
Title:		EMULATOR LOGIC BOARD	
Function:		SHUTTER MOTOR CONTROL	
Drawing No.	REV.	Date	07/21/97
SCH-9903003B	1.4	Page 6	of 14



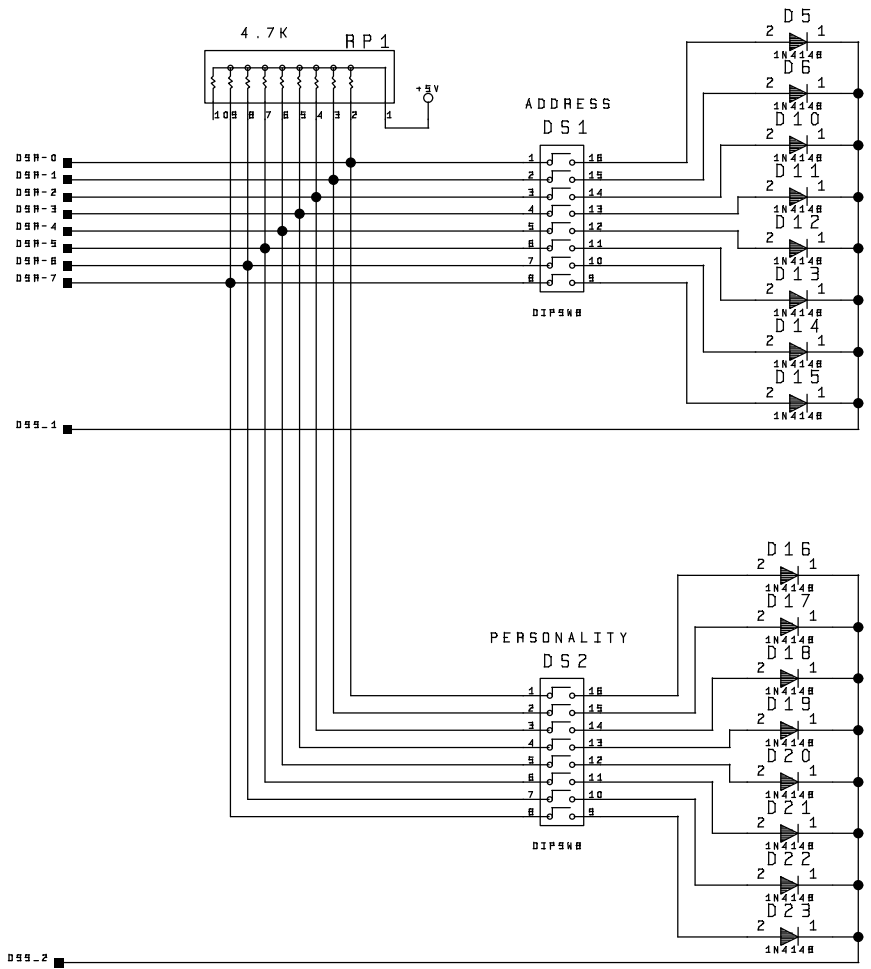
HIGH END SYSTEMS INC.			
Title:		EMULATOR LOGIC BOARD	
Function:		X AND Y AXIS CONTROL	
Drawing No.	REV.	Date	07/21/97
SCH-9903003B	1.4	Size A2	Page 7 of 14



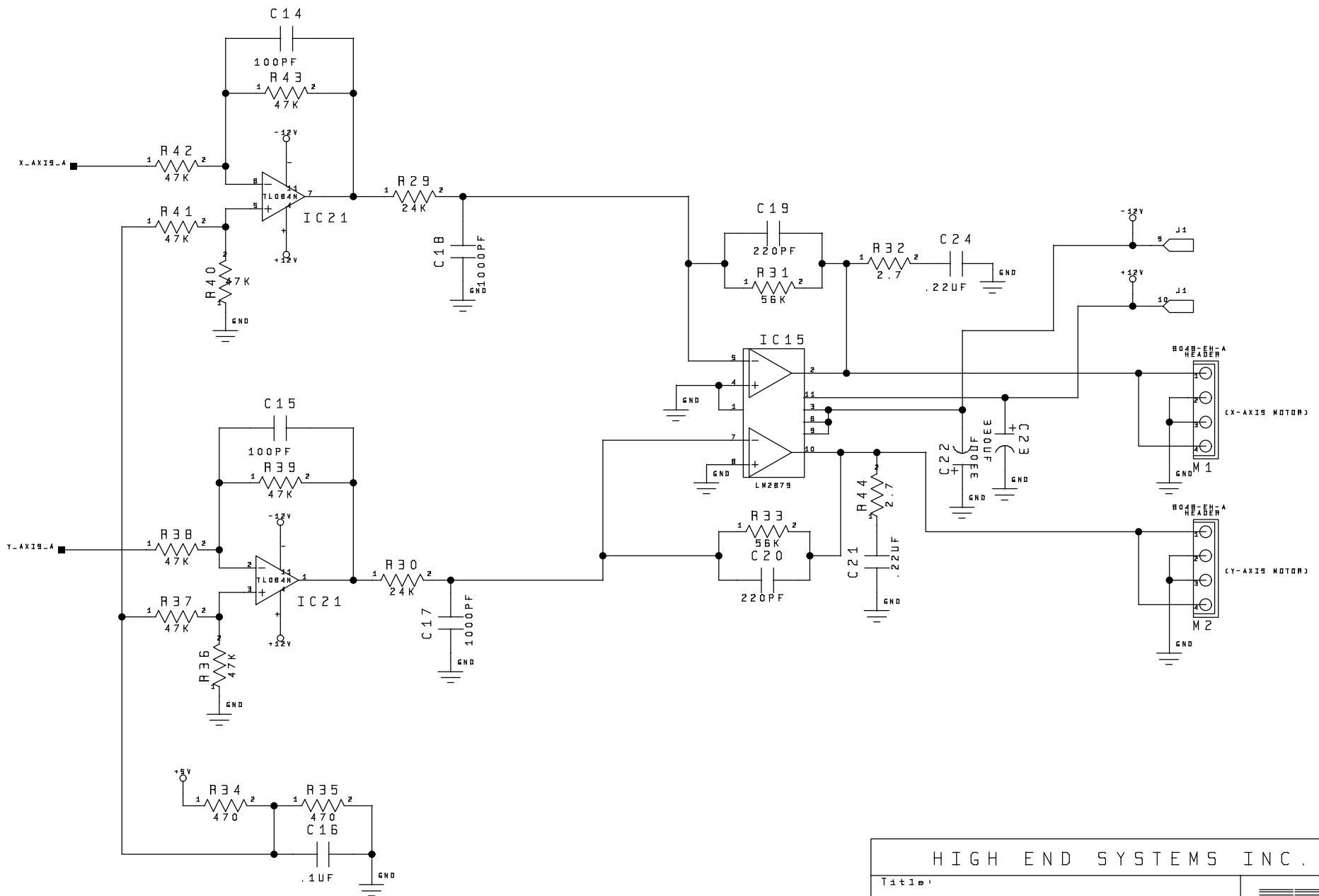
HIGH END SYSTEMS INC.			
Title:		EMULATOR LOGIC BOARD	
Function:		RAM	
Drawing No.	REV.	Date	07/21/97
SCH-9903003B	1.4	Size A2	Page 8 of 14



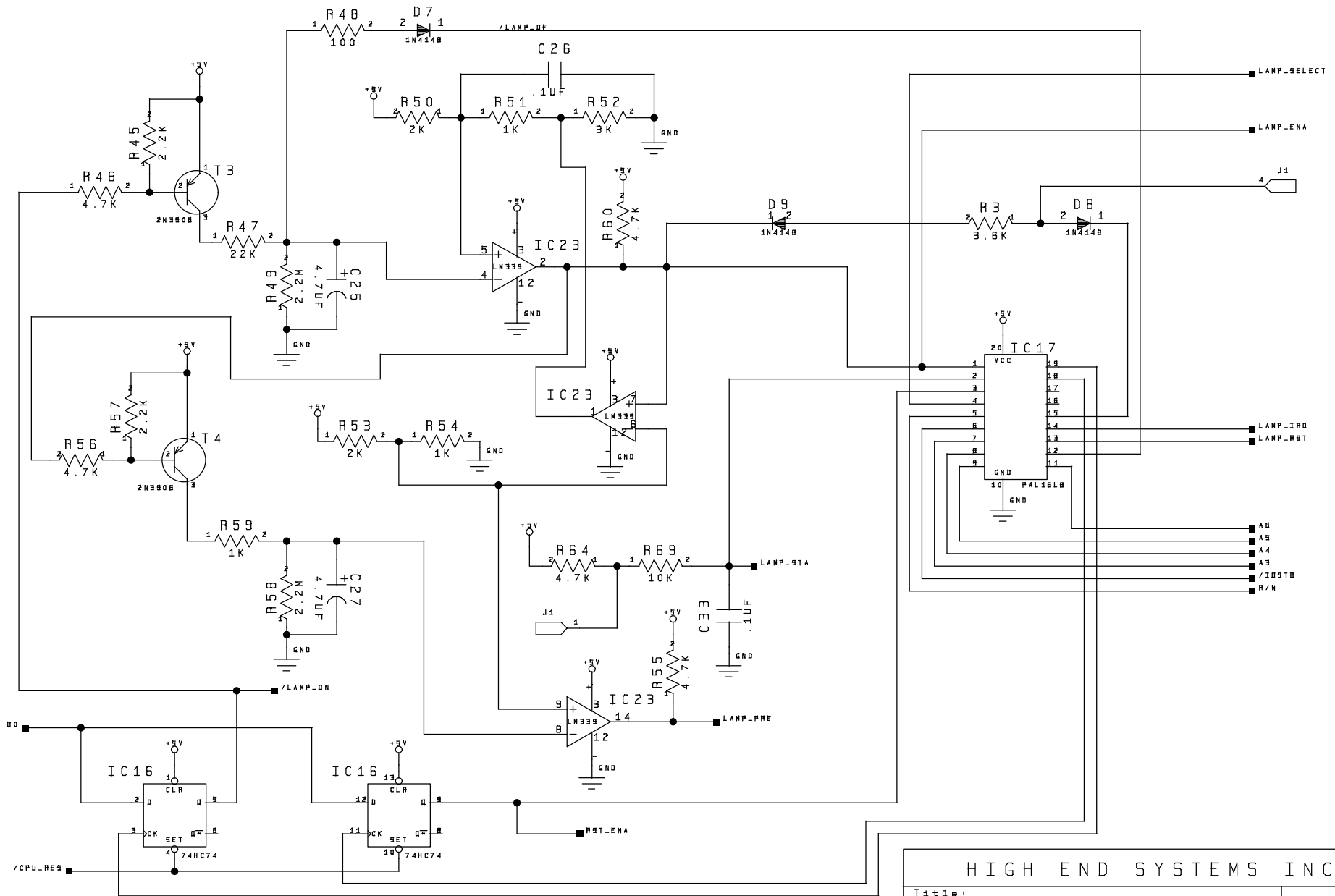
HIGH END SYSTEMS INC.			
Title:		EMULATOR LOGIC BOARD	
Function:		FUNCTION	
Drawing No.	REV.	Size	Date
SCH-9903003B	1.4	A2	07/21/97
Page 9		of 14	



HIGH END SYSTEMS INC.			
Title:		EMULATOR LOGIC BOARD	
Function:		FUNCTION	
Drawing No.	REV.	Size	Date
SCH-9903003B	1.4	A2	07/21/97
			Page 10 of 14



HIGH END SYSTEMS INC.			
Title:		EMULATOR LOGIC BOARD	
Function:		X & Y AXIS MOTOR CONTROL	
Drawing No.	REV.	Size	Date
SCH-9903003B	1.4	A2	07/21/97
			Page 11 of 14

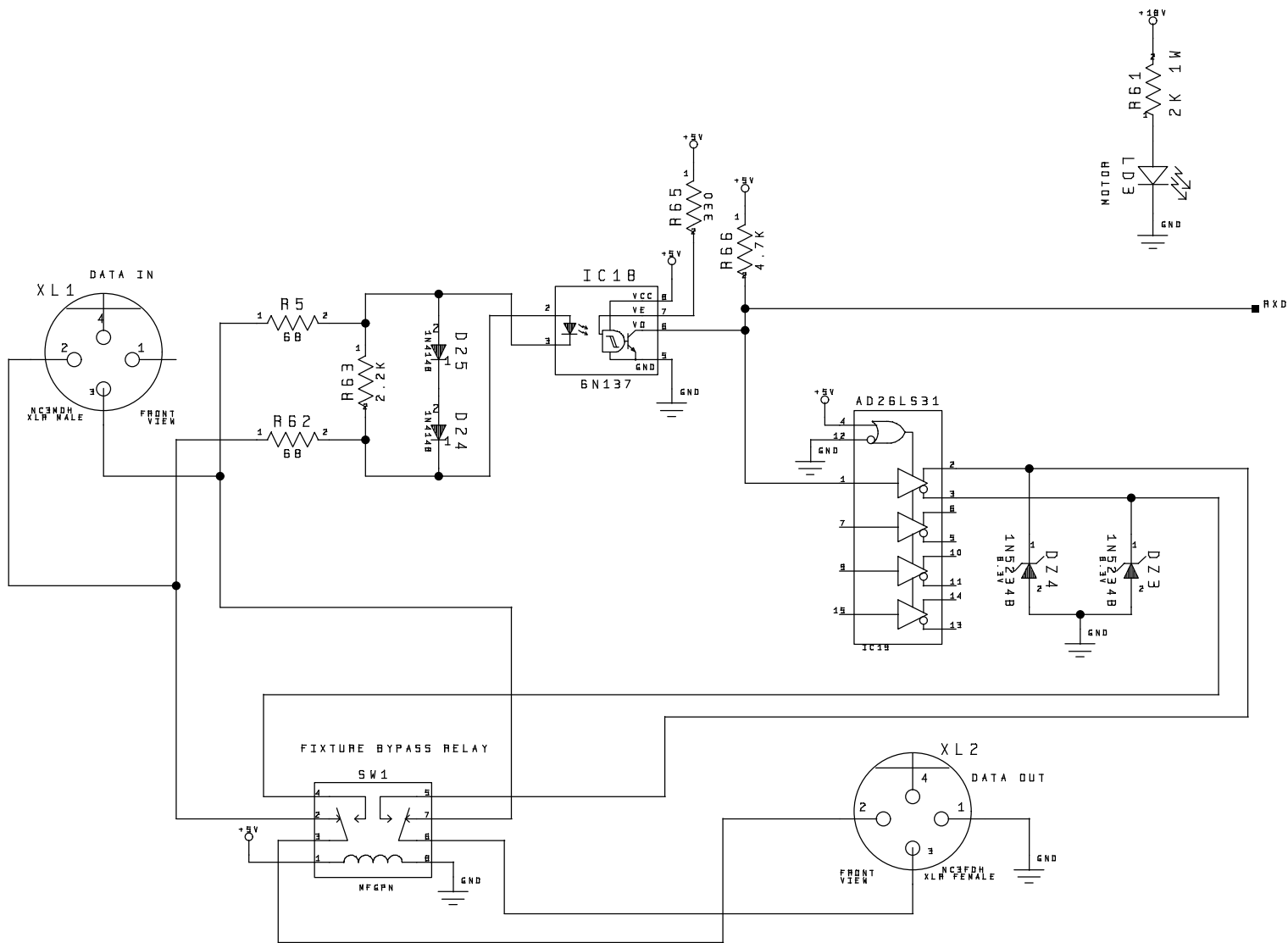


HIGH END SYSTEMS INC.

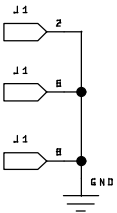
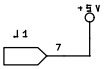
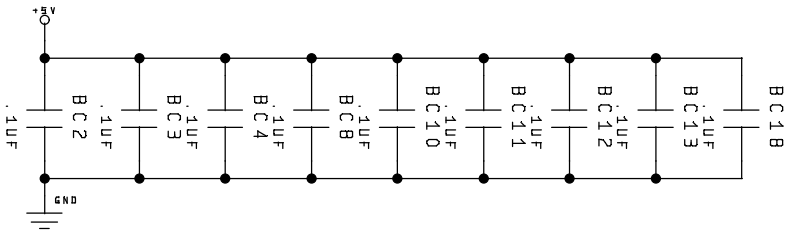
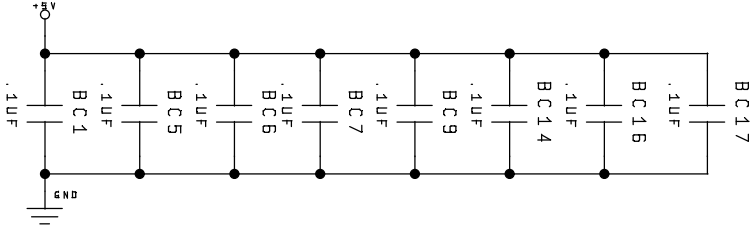
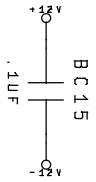
Title: EMULATOR LOGIC BOARD
 Function: FUNCTION



Drawing No. SCH-9903003B	REV. 1.4	Size A2	Date 07/21/97
			Page 12 of 14



HIGH END SYSTEMS INC.			
Title:		EMULATOR LOGIC BOARD	
Function:		FUNCTION	
Drawing No.	REV.	Date	07/21/97
SCH-9903003B	1.4	Size A2	Page 13 of 14



HIGH END SYSTEMS INC.

Title: EMULATOR LOGIC BOARD



Function: FUNCTION

Drawing No.
SCH-9903003B

REV.
1.4

Size A2

Date 07/21/97
Page 14 of 14