

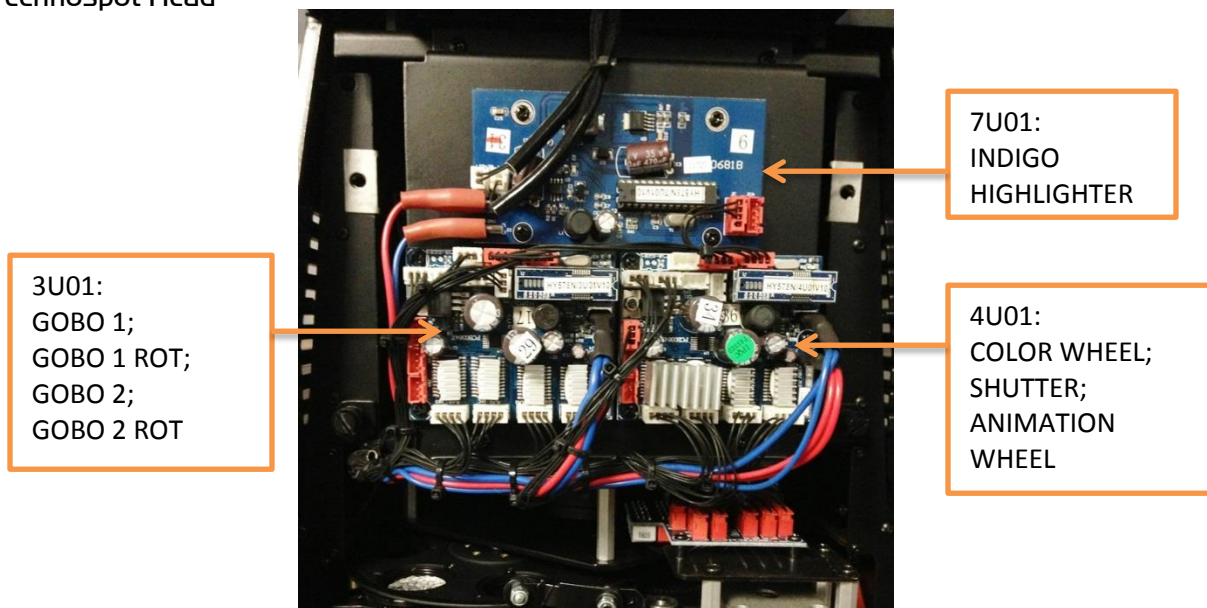


Technospot PCB Locations

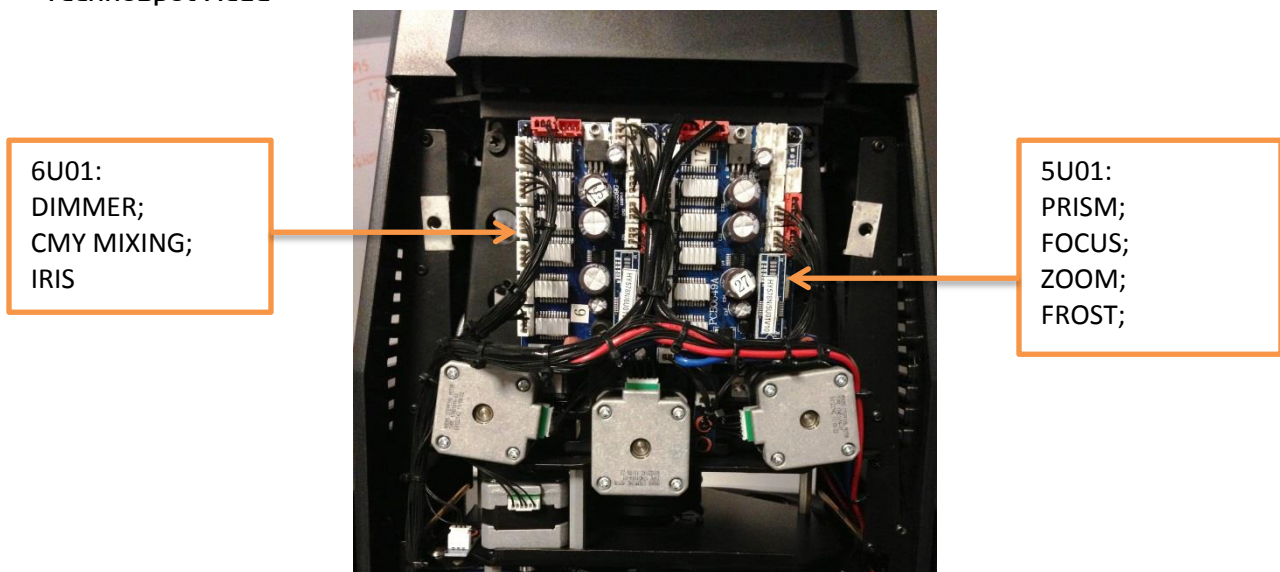
- 1U01.GSD - Display board
- 2U01.GSD - Pan/tilt board
- 3U01.GSD - Gobo wheel board
- 4U01.GSD - Color, shutter, animation wheel board
- 5U01.GSD - Prism, focus, zoom, frost board
- 6U01.GSD - Dimming, CMY, Iris board
- 7U01.GSD - Indigo Highlighter control board

Flash ROM Chips will have code: 578

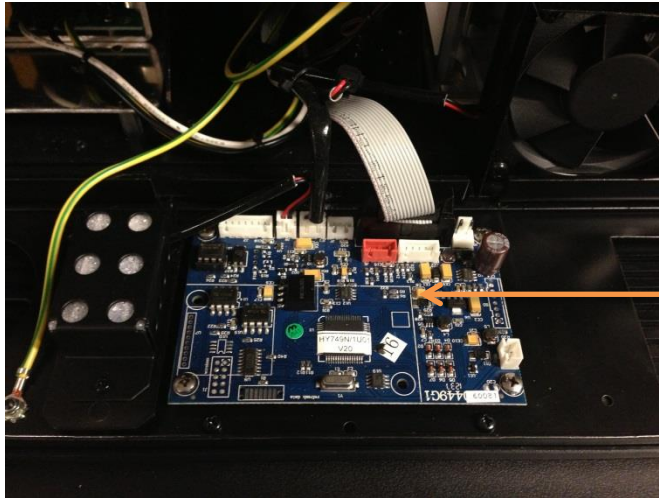
Technospot Head



Technospot Head

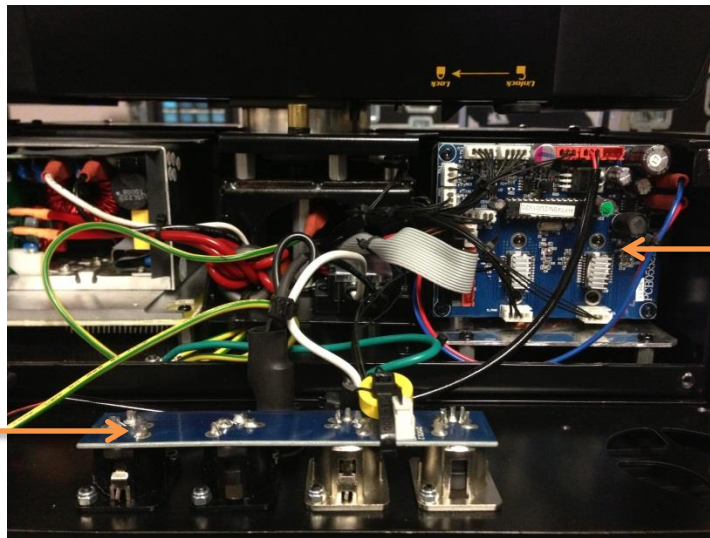


Technospot Base



1U01:
DISPLAY

Technospot Base



2U01:
PAN / TILT

DMX PCB